

ETSAB MBLandArch

TACTICAL LANDSCAPE URBANISM
MICROACUPUNTURE **BARCELONA**
INTERNATIONAL WORKSHOP HARBIN INSTITUTE OF TECHNOLOGY

MIND THE GAP



TACTICAL LANDSCAPE URBANISM
MICROACUPUNTURE BCN



EDITOR ENRIC BATLLE

WORKSHOP COORDINATOR MARINA CERVERA

FACULTY ENRIC BATLLE
MARINA CERVERA
MAR PÉREZ

ASSISTANTS WU HUANG
ALEJANDRA LIÉBANA
LI YUAN
JAVIER ZALDÍVAR

Published by

ETSAB MBLandArch

Editor

ENRIC BATLLE

Authors

ENRIC BATLLE
MARINA CERVERA
MAR PÉREZ
JAVIER ZALDÍVAR

Workshop Coordinator
MARINA CERVERA

Faculty

ENRIC BATLLE
MARINA CERVERA
MAR PÉREZ

Assistants

WU HUAN
ALEJANDRA LIÉBANA
QIAN LI YUAN
JAVIER ZALDÍVAR

Interns

LIDIA CARRILLO

Compiler

LIDIA CARRILLO

Translation

THE AUTHORS

Graphic Design

LIDIA CARRILLO

Cover Design

CORINA ANDUEZA
LIDIA CARRILLO
XI HE
FRANCESCO MAGLIA
PALOMA MOSTO
CHEN XIAO CHAOI

Authors per chapter

Letter from the director
ENRIC BATLLE(p7)

Topic

MARINA CERVERA (p9, p13-15)
MAR PÉREZ (p9)
JAVIER ZALDÍVAR (p9)

Study Area

MAR PÉREZ (p17)

Site visit

MAR PÉREZ (p21, p24)
JAVIER ZALDÍVAR (p23)

Analysis

MAR PÉREZ (p27-29)

Masterplan

MAR PÉREZ (p51-76)

Pop Up Green!

MARINA CERVERA (p85-87)

Lectures

JAVIER ZALDÍVAR (p89)

Conclusions

MAR PÉREZ (p 95-97)

Glossary

MARINA CERVERA (p99-103)

Printed in Spain

ISBN: 978-84-9880-701-1.

Primera edició: Diciembre 2017

© Los autores, 2017

© Iniciativa Digital Politècnica, 2017

Oficina de Publicacions

Acadèmiques Digitals de la UPC

Jordi Girona 31,

Edifici Torre Girona, Planta 1, 08034
Barcelona

Tel.: 934 015 885

www.upc.edu/idp

E-mail: info.idp@upc.edu



DUOT Departament
d'Urbanisme i
Ordenació del
Territori



Harbin Institute of Technology

ACKNOWLEDGEMENT

This publication collects the results of the workshop Mind the Gap within the program of the ETSAB Master's Degree MBLandArch · Master Barcelona in Landscape Architecture · with the Harbin Institute of Technology of China during the 2nd semester of the academic year 2015-2016.

At the Winterschool, students and academics from two universities work together on contemporary landscape architectural projects of International relevance. The first Winter School organised by the Polytechnical University of Catalonia, UPC. From this successful experience arose the idea of a joint curriculum for the programme a partner institution will take place in the future.

Special congratulations to the Harbin Institute of Technology to let us be part of it.

6

LETTER FROM
THE DIRECTOR

8

TOPIC

16

STUDY AREA

20

SITE VISIT

26

ANALYSIS

50

MASTERPLAN

84

POP UP GREEN

88

LECTURES

94

CONCLUSIONS

98

GLOSSARY

104

FACULTY

LETTER FROM THE DIRECTOR

The landscape architecture is interested in all the exterior spaces and, from the design of public space that Barcelona has projected to the world, we have returned to look at the large scale and we have incorporated the language of ecology.

In relation to the large scale, landscape architecture is related to geography, land management, social sciences and all urban decisions that, day by day, build the reality of our cities.

Ecology, biology, agronomy, the different environmental sciences and the various landscape engineering projects are all part of the decisions we make, from the most global to the most local, from those most related to environmental problems to the most simple ideas that we can use in the conservation, restoration, or construction of our landscape.

This multi-disciplinary and trans-scalar vision, which is typical of landscape architecture, is also built without renouncing the capabilities of the world of art and architecture that have traditionally nurtured our profession and which have been so brilliantly developed by the School of Architecture of Barcelona.

Enric Batlle, Director of MBLandArch

TOPIC

The heart of Barcelona has been transformed through “small scale masterplans” ever since the seventies. This urban microacupuncture has been mainly focused on the gaps.

The goal of these empty spaces, wether if they were existing or new, was to renew the old city providing cultural services, new pedestrian axes and overall a new structure of empty spaces with meeting places for the neighborhood and oxygen for the old town.

The current international workshop’s aim is to focus on the empty spaces in order to reinforce the synergies of the district whilst giving answer to its physical, social and cultural needs.

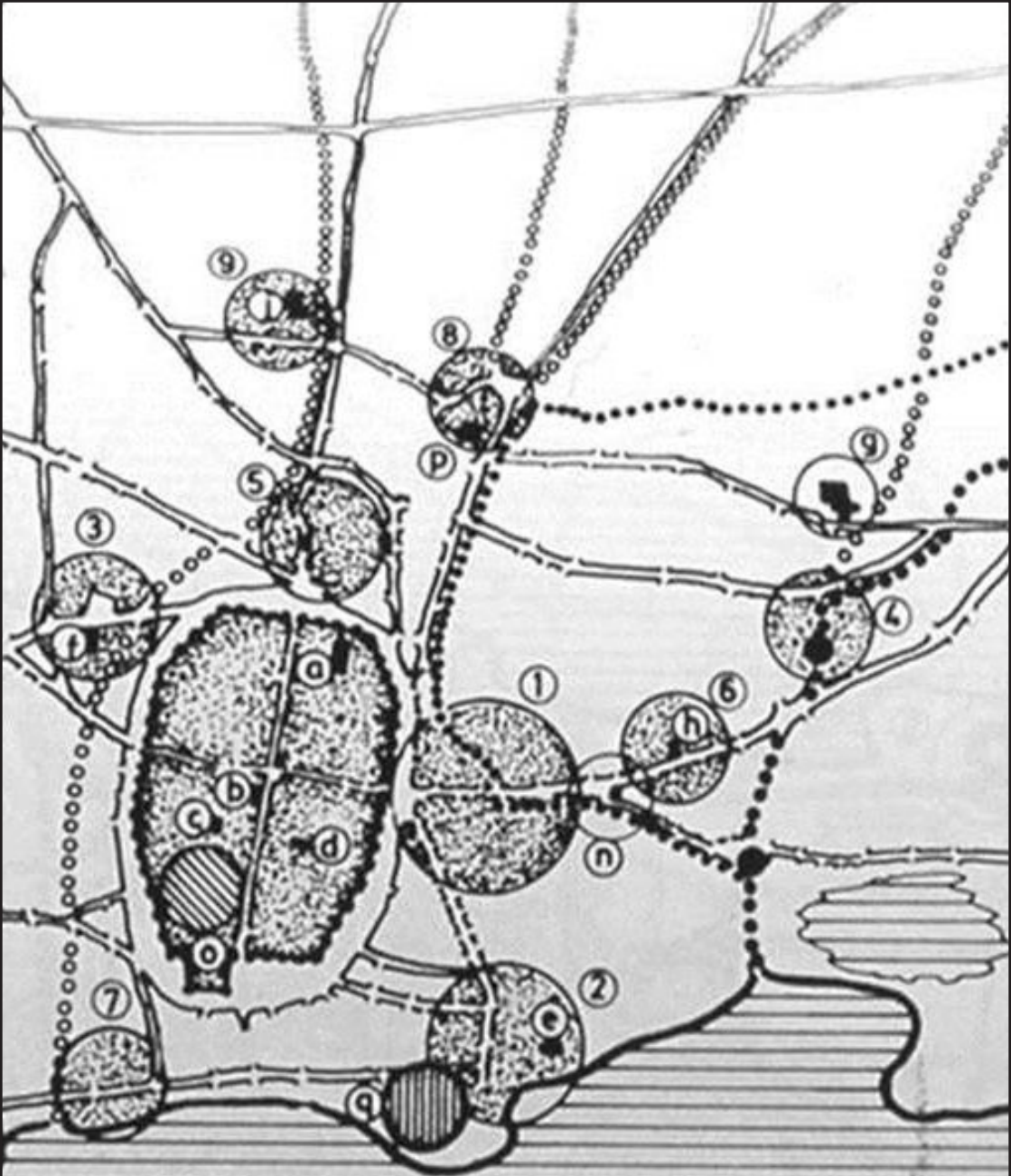
The workshop’s result should enhance the old town through its urban voids, kicking off by the existing gaps analyses and ending up with a new strategy of its reconsideration as system: in networks, clusters or intangible connections.

Thus, mind the gaps!



Aerial photo by the Italian airforce





Since 1783, through the throw of the first medieval wall (Ramblas) and the gutting of the new Ferran, Jaume I and Princesa streets, to the opening of new axes as Via Laietana in 1908 or the urban micro acupuncture via “small scale master plans” in the 80’s to the latest examples of Rambla del Raval intervention in 2000 or the Town’s council mores ephemeral Gap’s Master Plan.

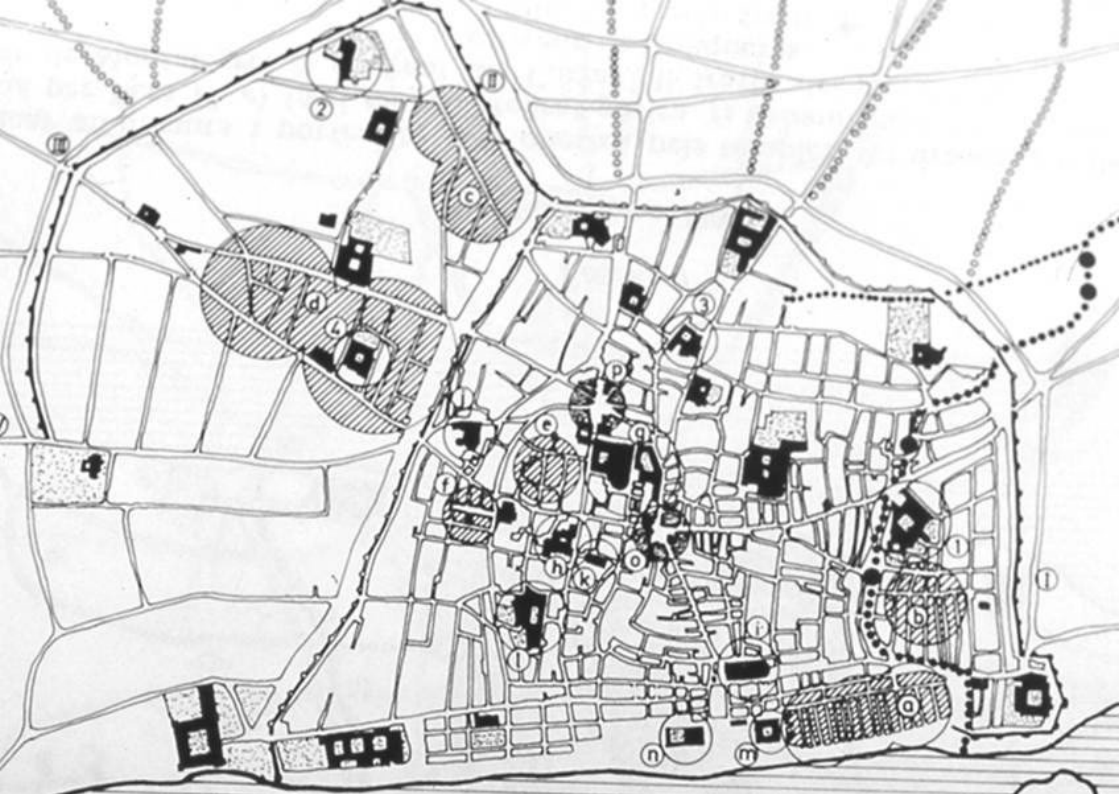
Nowadays, new transient abandoned lots have completed the mosaic of “gaps” around the city. The coexistence with expectant plots in small, medium or large cities around the world has undergone a considerable increase in recent years, particularly since the outbreak of the world economic crisis that has decelerate the real state dynamics that, until now, seemed to have worked with “relative” normalcy.

With a closer look to this “new” reality within a dense urban consolidated and almost collapsed fabric inside the old walled city of Barcelona, the contemporary public reaction is perfectly understandable and completely predictable: residents of the neighborhoods claiming for the appropriation of those spaces.

In some cases, the informal appropriation was aiming for the integration of such spaces to the scarce existing network of public spaces in the district of Ciutat Vella -especially in the neighborhoods of El Raval, Gothic Sant Pere and Santa Caterina-La Ribera. Not all the claim have succeeded but few examples have developed into interesting study cases thanks to the support of municipal institutions that adhered the claim (Square 8th March, “the shame hole or forat de la vergonya “). In other cases, the appropriation purpose was mainly satisfying some specific collective needs for a given time: informal playgrounds, vegetable gardens, improvised meeting points...



Saurí, M.; Matas, J. (1854),
Guía general para Barcelona, dedicada a la junta de fabricas de Cataluña. Barcelona.
Imprenta Manuel Saurí.



Barcelona, sigle XII

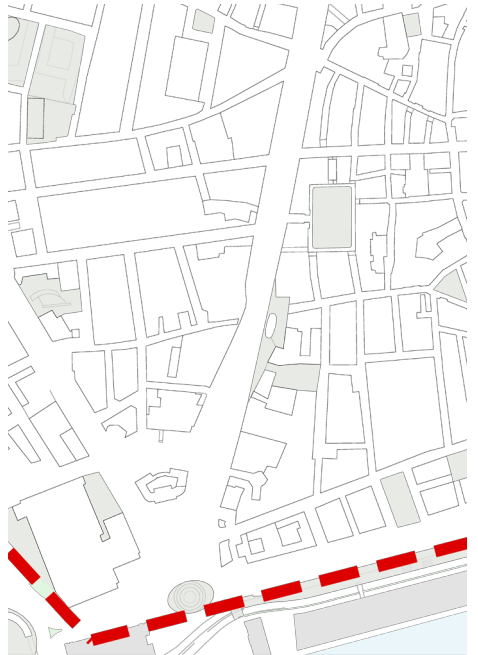
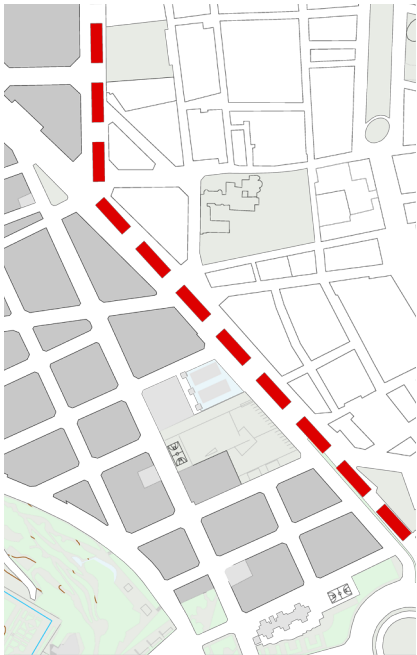
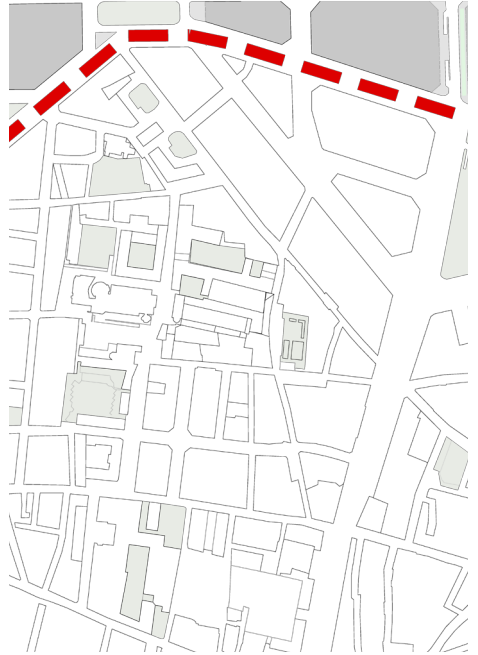
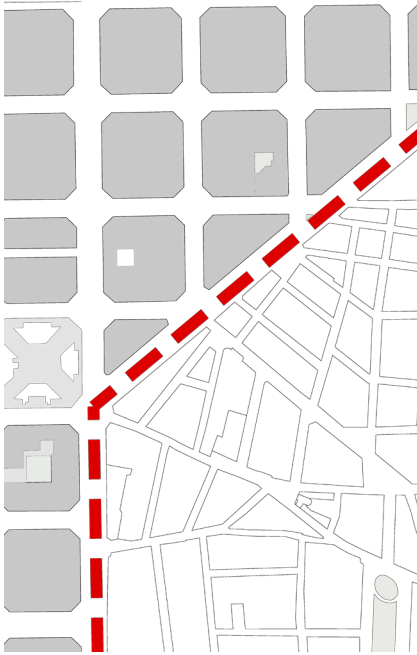
Students from ETSAB undergraduate studies and the MBLandArch (Barcelona Master Landscape Architecture) worked together with International University of Harbin (China) students in order to bridge their different ages, backgrounds and even cultures and finally in find different management strategies (theoretical or technical) that allow to suggest general solutions to a specific problem in the city of Barcelona but that could be extrapolated to other cities worldwide.

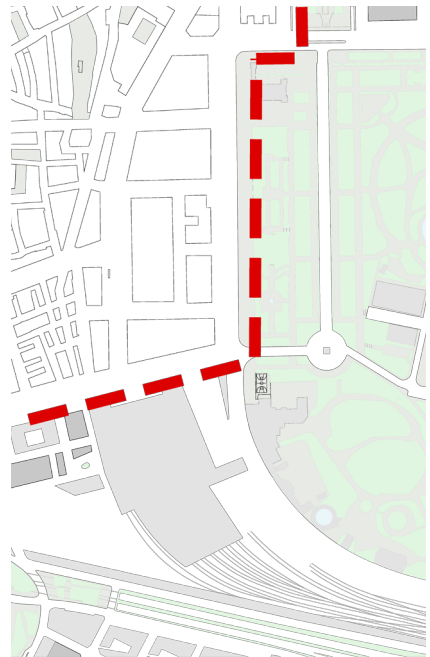
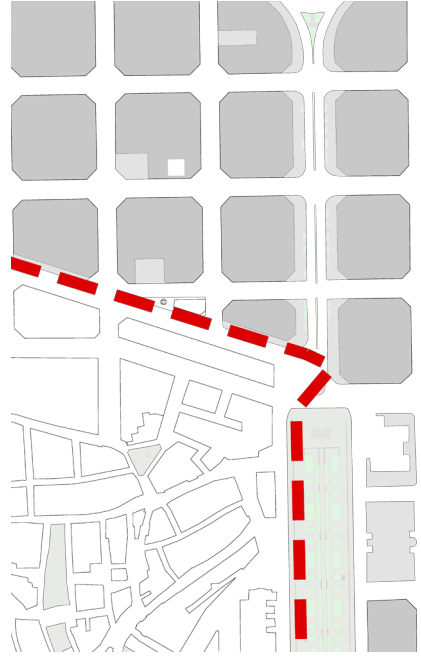
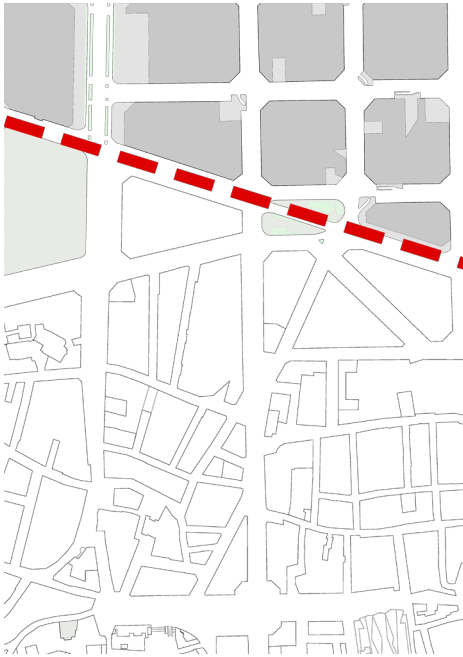
STUDY AREA

The Study Area was the Raval neighborhood born on the extension of the medieval city wall and placed in Ciutat Vella Barcelona District.

It's the oldest part of the city, one of the most touristic ones and a former degraded area. It's been renewed during the last fifty years till the point it's almost been occupied by tourists and foreign investors generating gentrification. Although there has been a lot of public and private investment there are still some gaps, some abandoned places. Places everybody sees and they remain the same. This old city gaps are little scale places where the Harbin Institute of Technology and the MBLandArch students could work and propose attractive spaces which could modify and improve the neighborhood life.

The Study Area was divided into 8 little ones. Each one was visited by each group with its tutor before start working. While the promenade students had to make the analysis. Each area had different kind of gaps and the analysis conclusions where shown in the "affiches".





SITE VISIT

The Raval Area was divided in 8 little study areas. Each one was visited with a different tutor going from a major scale , as Plaza Catalunya square, to the minor scale like the kiss wall of the Isidre Nonell Square.

The main idea was visiting the gaps trying to address the eye of the landscape students to the common characteristics of the gaps in each study area in order to classify them in the affiches and structure their characteristics and requirements . Thus, the purpose of the visit was addressing the eye to the common traces pointing out, at the same time, the personality of each gap. Students had to take fast notes of the sites. It was especially difficult for those who came from abroad. That's why we tried to mix foreign and local students. It also allowed students to learn new methodologies and landscape regards and resources.

As time was rather limited each group had to come back to the site after the visits which taked about two hours in order to complete the analysis scope of each gap. They had to take further 3D and 2D notes, photographs, writed notes, everything they could to express what their eyes were seeing.



WORKSHOP PRESENTATION

The presentation of the workshop took place in Carretes 47 (www.carretes47.com) an old textile factory of the s. XVIII in the Raval neighborhood, rehabilitated and converted into a coworking space. Curiously, this factory is affected by an obsolete urban plan that forgets to protect the industrial architectural heritage of the city, and that the new municipal policies have temporarily paralyzed in order to protect the historical memory of the place. As a metaphor, or rather, direct simile, the rehabilitation and conversion of this factory served as a starting point to explain, both to our local students and visiting students at Harbin University, the possibility of giving other uses to spaces susceptible of being valued.

GAP VISIT

The goal of the second visit was analyzing the study area gaps from a historical point of view to a social, hygienical and technical (lightening, greening ,rehabilitation, etc...) requirements. The solution had to attend to those analysis and hat to add value especially to the local inhabitants, those who “live the gaps” .

Therefore, it was not only a matter of an aesthetic solution but a more complex solution, a practical solution mainly for the Barcelona citizens.

This second visit took place without the tutors, they had to express what their eyes saw mainly graphically. In this second visit there was only the eye of the landscape architecture students. This second visit was the seed of each masterplan.



ANALYSIS

The analysis showed different concepts:

TYPE OR URBAN VOID

if it was public or private, fenced off or accessible, vacant or had certain appropriation and the type of dividing wall, if there were windows or art.

The legal and physical limits were shown in this concept and how they could condition the project.



PHYSICAL TRACES OF THE NEIGHBORHOOD APPROPRIATION

if there was street art, graffiti, vegetation, spontaneous or planted vegetation, vegetable garden, if it was formal or informal or if it was paved, the shape it had, the benches or any other interventions.

The aim of this analysis part is that the gap intervention could sort out what didn't work and reinforce what already worked or had a value.

NON-PHYSICAL TRACES

they were obliged to analyze if there were activities, habits, hobbies, fluxes, views, comfortability, drainage, lighting, etc...

We wanted to focus this analysis concept on the neighborhood behavior and propose a gap solution according to it.

INTERVIEW WITH NEIGHBORHOODS

Neighborhood needs, action program or how they imagined it and how they could manage or take care of it.

The goal was making a project useful for the neighborhood.

LOCATION, AERIAL VIEW AND SECTIONS WITH MEASURES

They had to draw the gap to see the isolation characteristics, to see if it was a deep and long gap, to manage the scale and materialized the previous concepts



AFFICHE

TYPE OF URBAN VOID

PUBLIC OR PRIVATE? FENCED OFF OR ACCESSIBLE? VACANT OR CERTAIN APPROPRIATION? TYPE OF DIVIDING WALL. ARE THERE WINDOWS? ART?

Is a lighting point in a street. public space

PHYSICAL TRACES of neighbourhood APPROPRIATION

STREET ART? GRAFFITI? VEGETATION? SPONTANEOUS OR PLANTED? VEGETABLE GARDEN? FORMAL OR INFORMAL? PAVIMENTATION? SHAPE? BENCHES? OTHER INTERVENTIONS...

A big lightly heart, street art in front of a theater to recognize the street

NON- PHYSICAL TRACES in or along THE GAP

ACTIVITIES. HABITS. HOBBIES. FLUXES. VIEWS. CONFORTABILITY. DRAINAGE. LIGHTING.

It Is Use Like A Metting Point

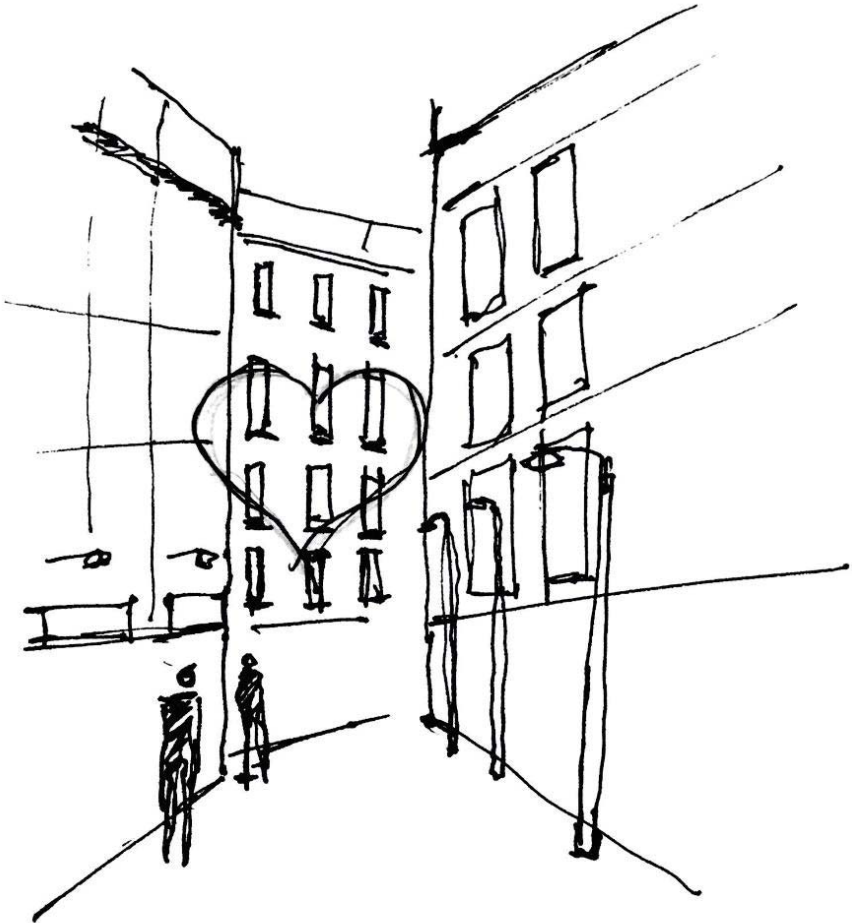
PICTURES



INTERVIEW WITH NEIGHBOURHS

WHAT WOULD THEY NEED? ACTION PROGRAM HOW WOULD THEY IMAGINE IT?
WHO COULD MANAGE- TAKE CARE OF IT?

LOCATION, AERIAL VIEW, 3D AND SECTIONS WITH MEASURES



AFFICHE

TYPE OF URBAN VOID

PUBLIC

undefined use

intersection

stop off point

multifacade

no clear limits

planted trees

NON- PHYSICAL TRACES in or along THE GAP

bar terraces

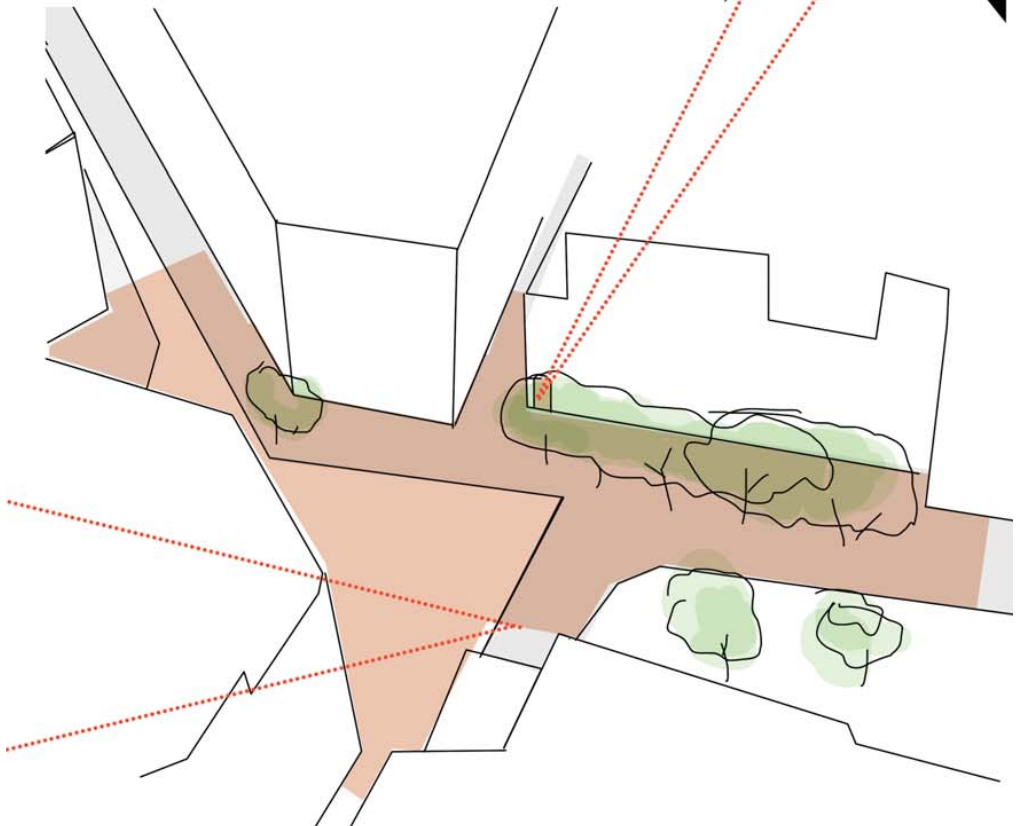
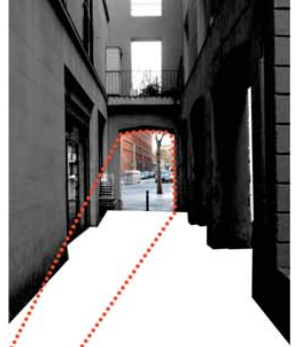
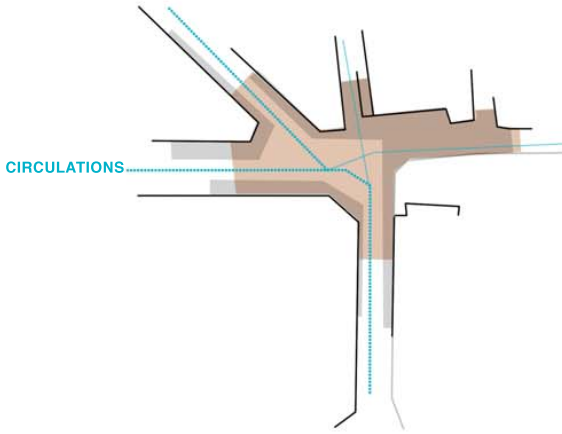
parking lots

pedestrian zones

public park



LOCATION, AERIAL VIEW, 3D AND SECTIONS WITH MEASURES



AFFICHE 3

TYPE OF URBAN VOID

PUBLIC OR PRIVATE? FENCED OFF OR ACCESSIBLE? VACANT OR CERTAIN APPROPRIATION?
TYPE OF DIVIDING WALL. ARE THERE WINDOWS? ART?

Private space, fenced off by a light fence.
Big partition walls without windows

PHYSICAL TRACES of neighbourhood APPROPRIATION

STREET ART? GRAFFITI? VEGETATION? SPONTANEOUS OR PLANTED? VEGETABLE GARDEN?
FORMAL OR INFORMAL? PAVIMENTATION? SHAPE? BENCHES? OTHER INTERVENTIONS...

Street art and graffiti covering the partition walls
Planted vegetation, urban garden (becoming)
wooden chairs

NON- PHYSICAL TRACES in or along THE GAP

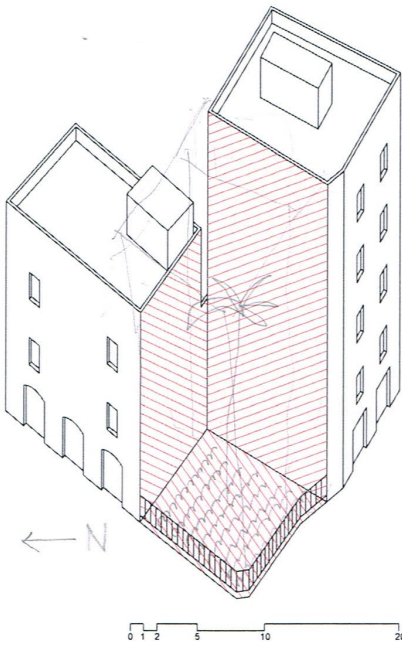
ACTIVITIES. HABITS. HOBBIES. FLUXES. VIEWS. CONFORTABILITY. DRAINAGE. LIGHTING.

The gap is in a corner, next to a big public space.
Oriented to the south-west.

INTERVIEW WITH NEIGHBOURGH

WHAT WOULD THEY NEED? ACTION PROGRAM HOW WOULD THEY IMAGINE IT?
 WHO COULD MANAGE- TAKE CARE OF IT?

LOCATION, AERIAL VIEW, 3D AND SECTIONS WITH MEASURES



PICTURES



AFFICHE

TYPE OF URBAN VOID

Group of different public spaces which work as a “big gap” in the lower part of Raval neighbourhood.

It's composed by a few public plazas with trees, as well as big empty lots in wait of transformation, and the Jardins del Baluard, which are part of the “Museo Marítimo de Barcelona” and are open just some specific days during the year.

It's enclosed by two busy avenues, which makes it accessible but at the same time uninviting. Actually, it doesn't receive too much use.

PHYSICAL TRACES of neighbourhood APPROPRIATION

In one of the “stand-by” lots, which is surrounded by a fence, there are 5 ping-pong tables.

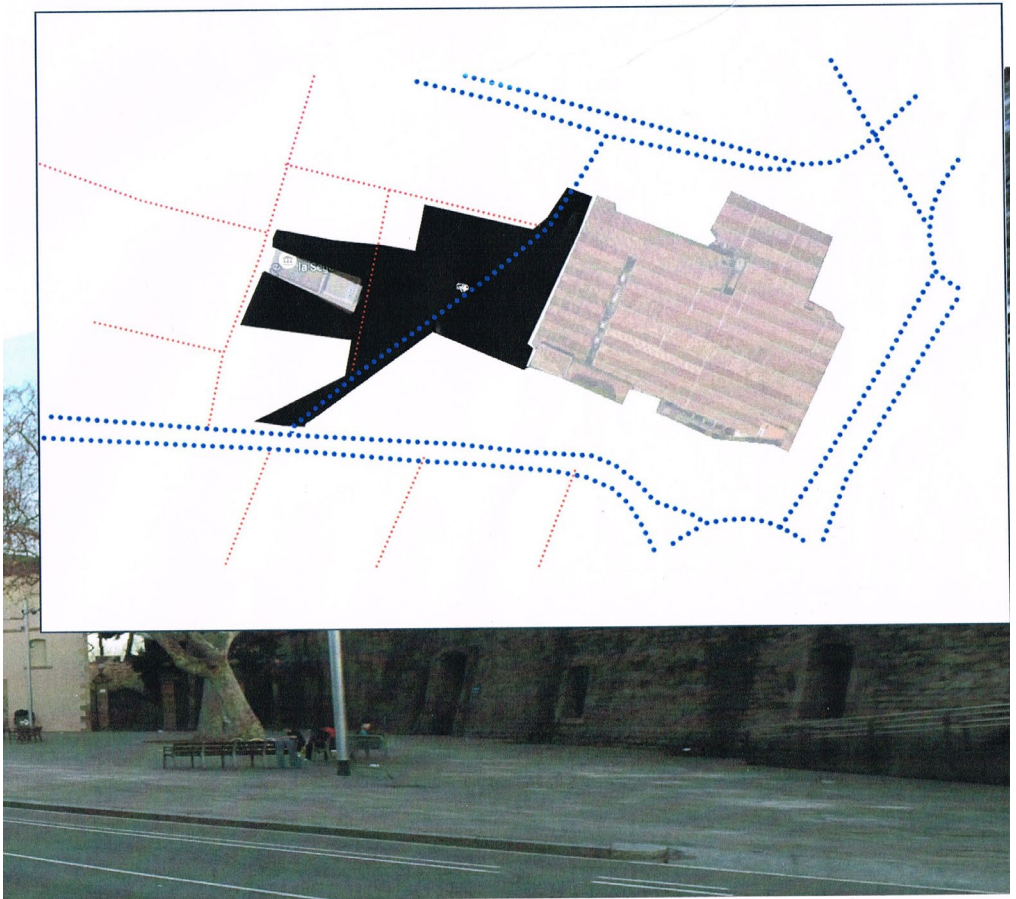
During the first sundays of every month, exist a street market in that place, called “Flea Market”.



NON- PHYSICAL TRACES in or along THE GAP

It's an open place, with a lot of urban trees, and a big portions of permeable ground.
The place use to be used by drogadicts, homeless people and other troubled individuou.

LOCATION, AERIAL VIEW, 3D AND SECTIONS WITH MEASURES



AFFICHE

TYPE OF URBAN VOID

PUBLIC OR PRIVATE? FENCED OFF OR ACCESSIBLE? VACANT OR CERTAIN APPROPRIATION?
TYPE OF DIVIDING WALL. ARE THERE WINDOWS? ART?

- Public
- Normally accessible but now in work
- Some kind of appropriation, signs of people sleeping there, cartboards
- Roman wall, Kerbstone, some building fastened to the wall

• ~~Window~~ Window when there's the building
 PHYSICAL TRACES of neighbourhood APPROPRIATION Patrimonial art

STREET ART? GRAFFITI? VEGETATION? SPONTANEOUS OR PLANTED? VEGETABLE GARDEN?
FORMAL OR INFORMAL? PAVIMENTATION? SHAPE? BENCHES? OTHER INTERVENTIONS...

- No street art or graffiti
- Planted trees and spontaneous ones
- No vegetable garden
- Formal
- Work in progress, roman ruins
- Irregular follows the form of the Roman wall
- The Kerbstone works like a bench

NON- PHYSICAL TRACES in or along THE GAP

ACTIVITIES. HABITS. HOBBIES. FLUXES. VIEWS. CONFORTABILITY. DRAINAGE. LIGHTING.

- Walking along it (but outside it), sitting on the kerbstone, people use to sleep in by night
- Longitudinal flux
- Channelled view due to the high walls which surrounds the gap
- Not completely draining due to roman ruins
- No light (natural)

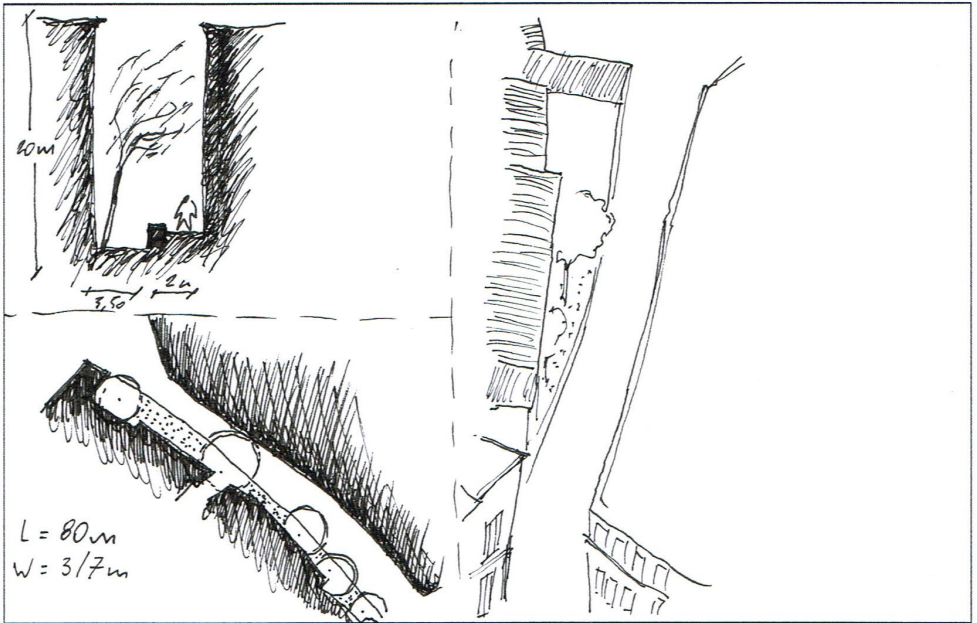
of the Roman Wall



INTERVIEW WITH NEIGHBOURGHS

WHAT WOULD THEY NEED? ACTION PROGRAM HOW WOULD THEY IMAGINE IT?
WHO COULD MANAGE- TAKE CARE OF IT?

LOCATION, AERIAL VIEW, 3D AND SECTIONS WITH MEASURES



PICTURES



GROUP 3 GAP 2 CARRER RIERA BAIXA/ BAR RESOLÍS

TYPE OF URBAN VOID

PUBLIC OR PRIVATE? FENCED OFF OR ACCESSIBLE? VACANT OR CERTAIN APPROPRIATION? TYPE OF DIVIDING WALL. ARE THERE WINDOWS? ART?

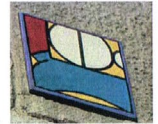
PUBLIC/PRIVATE
ACCESSIBLE
APPROPRIATION TERRACE
LOCKED WINDOW



PHYSICAL TRACES of neighbourhood APPROPRIATION

STREET ART? GRAFFITI? VEGETATION? SPONTANEOUS OR PLANTED? VEGETABLE GARDEN? FORMAL OR INFORMAL? PAVIMENTATION? SHAPE? BENCHES? OTHER INTERVENTIONS...

GRAFFITI STREET? SMALL INTERVENTIONS
THE BARS APPROPRIATE THE GAP
TRUE ROMANCE, DOLLS, DIVISION / DARK
VEGETATION (HANGING FROM BALCONIES)



NON- PHYSICAL TRACES in or along THE GAP

ACTIVITIES. HABITS. HOBBIES. FLUXES. VIEWS. COMFORTABILITY. DRAINAGE. LIGHTING.

ISOLATED DURING THE DAY, CROWDED AT NIGHT, WHEN THE BAR IS OPEN
PEOPLE WALKING THROUGH THIS SPACE
LOW FLUX OF PEOPLE
NOT A COMFORTABLE PLACE TO BE
WITHOUT DRAINAGE
TWO LIGHTING ELEMENTS

YIVIENDA
BAR
DOLLO

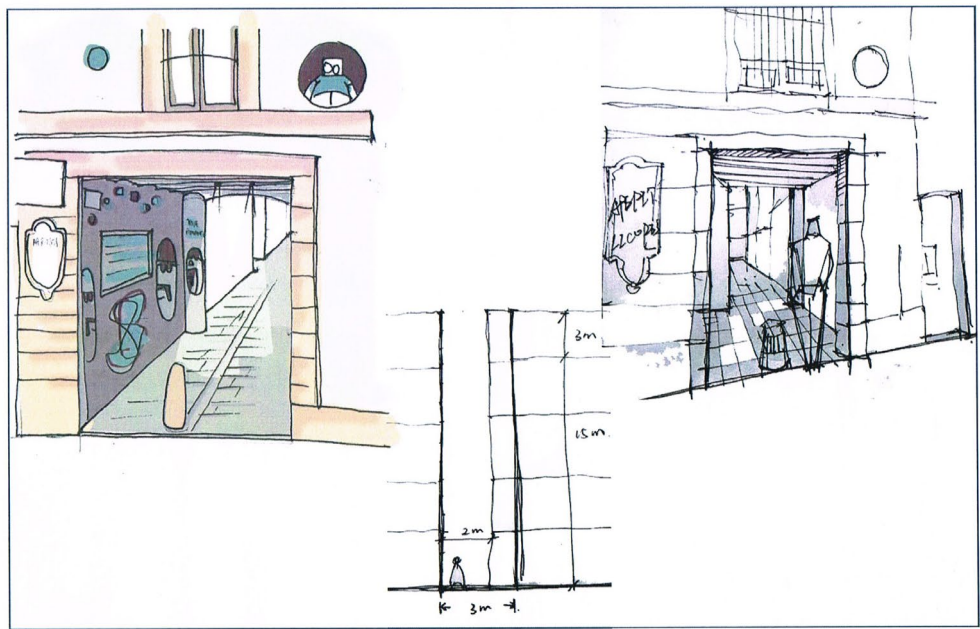
The diagram shows a narrow alleyway with buildings on both sides. A dashed line indicates a central path. On the right side, there are two buildings with houses inside, and a bar is located between them. A dollo is shown at the bottom right. The diagram is annotated with 'YIVIENDA', 'BAR', and 'DOLLO'.

INTERVIEW WITH NEIGHBOURGHS

WHAT WOULD THEY NEED? ACTION PROGRAM HOW WOULD THEY IMAGINE IT?
 WHO COULD MANAGE- TAKE CARE OF IT?

When the bar is open this spot is quite crowded and gives the street a lively character. The presence of large groups of people at night has two main consequences for the neighbours, on one hand it helps making the street somehow 'safer' to walk through, on the other hand they generate noise that can interfere with the neighbours needs. It will probably be an improvement for the (public) street/patio behind the passage, if the care the bar takes on their terrace would expand to that narrow space .

LOCATION, AERIAL VIEW, 3D AND SECTIONS WITH MEASURES



PICTURES



GROUP 3 GAP 3 SQUARE IN 'FLORISTES DE LA RAMBLA'

TYPE OF URBAN VOID

PUBLIC OR PRIVATE? FENCED OFF OR ACCESSIBLE? VACANT OR CERTAIN APPROPRIATION? TYPE OF DIVIDING WALL. ARE THERE WINDOWS? ART?

PUBLIC/PRIVATE
ACCESSIBLE
SAND. PLAYGROUND. CHAIRS. BIKE PARKING
WOODEN FENCE



PHYSICAL TRACES of neighbourhood APPROPRIATION

STREET ART? GRAFFITI? VEGETATION? SPONTANEOUS OR PLANTED? VEGETABLE GARDEN? FORMAL OR INFORMAL? PAVIMENTATION? SHAPE? BENCHES? OTHER INTERVENTIONS...

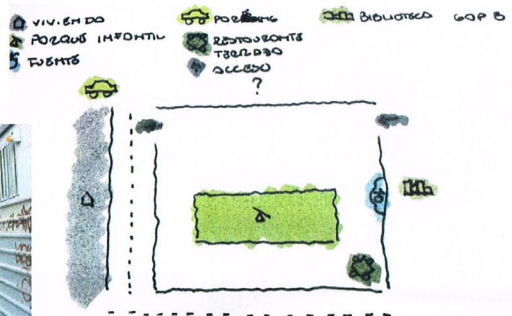
STORAGE CONSTRUCTION
VEGETATION: MELA, TIPUANA, NEVIUM, PITTOSPORUM
AXES: OPEN PASSAGE



NON- PHYSICAL TRACES in or along THE GAP

ACTIVITIES. HABITS. HOBBIES. FLUXES. VIEWS. CONFORTABILITY. DRAINAGE. LIGHTING.

SQUARE WITH KIDS PLAYGROUND AND A MONUMENTAL SPACE.
SQUARE WITH A PARK FOR CHILDREN AND A FOUNTAIN.
PEOPLE SITTING IN THE PLACE, PLAYING WITH THE KIDS, WALKING OR CYCLING BY.
HIGH FLUX OF PEOPLE
COMFORTABLE PLACES TO SEAT INSIDE THE PLAYGROUND
DRAINAGES OF THE STREET
ENOUGH LIGHTNING

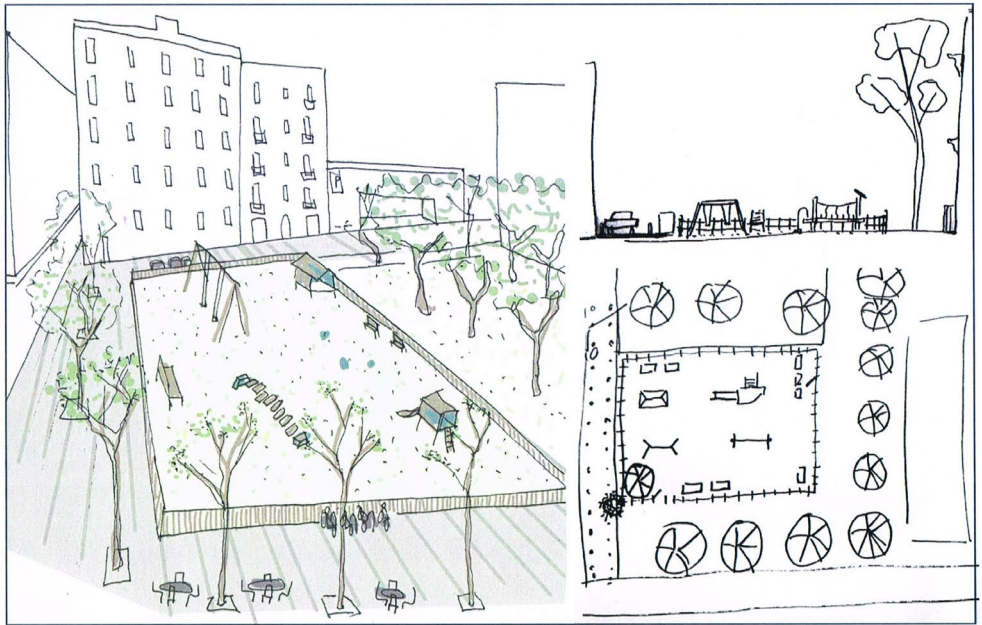


INTERVIEW WITH NEIGHBOURGHS

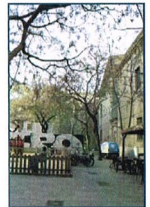
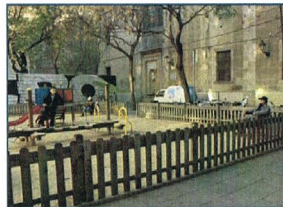
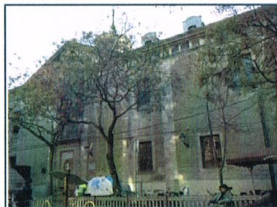
WHAT WOULD THEY NEED? ACTION PROGRAM HOW WOULD THEY IMAGINE IT?
WHO COULD MANAGE- TAKE CARE OF IT?

He thinks that the location of the site is convenient because it is in the way is between the school and his home, and being there is a part of his everyday life. He thinks that there are no major problems, but maybe some lack of maintenance of the elements of the playground and also, sometimes, the presence of groups of young people that meet there and use the space in a way that is not compatible with children's activities.

LOCATION, AERIAL VIEW, 3D AND SECTIONS WITH MEASURES



PICTURES

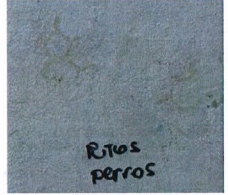


GROUP 3 GAP 1 CARRER HOSPITAL/ SANT LLÀTZER

TYPE OF URBAN VOID

PUBLIC OR PRIVATE? FENCED OFF OR ACCESSIBLE? VACANT OR CERTAIN APPROPRIATION? TYPE OF DIVIDING WALL. ARE THERE WINDOWS? ART?

PUBLIC
ACCESSIBLE - THREE ENTRIES FROM TWO STREETS
BENCHES. CHAIRS. SAND PIT. WOODEN FLOWERPOT
IRON FENCE - DOUBLE FENCE



PHYSICAL TRACES of neighbourhood APPROPRIATION

STREET ART? GRAFFITI? VEGETATION? SPONTANEOUS OR PLANTED? VEGETABLE GARDEN? FORMAL OR INFORMAL? PAVIMENTATION? SHAPE? BENCHES? OTHER INTERVENTIONS...

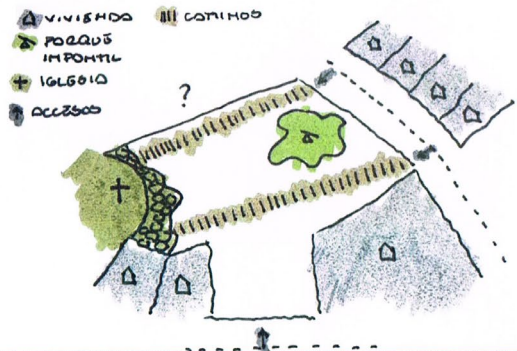
APPROPRIATION : 'FUCKING DOGS', BALL SHOTS, 'DONT PLAY WITH BALL' SIGN. GRAFFITI
VEGETATION: JACARANDA MIMOSI PHOLIA, PHYTOLACCA DYOCA, PRUNUS,
PITTIOSPORUM TOBIRA, TEUCRIUM FRUTICANS.
SPACE: DEFENSIVE STORES. ABSIDE. PARTITION WALLS. WINDOWS.



NON- PHYSICAL TRACES in or along THE GAP

ACTIVITIES. HABITS. HOBBIES. FLUXES. VIEWS. CONFORTABILITY. DRAINAGE. LIGHTING.

SQUARE WITH KIDS PLAYGROUND AND A MONUMENTAL SPACE.
PEOPLE SITTING IN THE PLACE AND WALKING THE DOGS.
LIMITD FLUX OF PEOPLE
THE SPACE HAS SOME COMFORTABLE PLACES TO SIT
WITHOUT DRAINAGE
TWO LIGHTNING ELEMENTS.

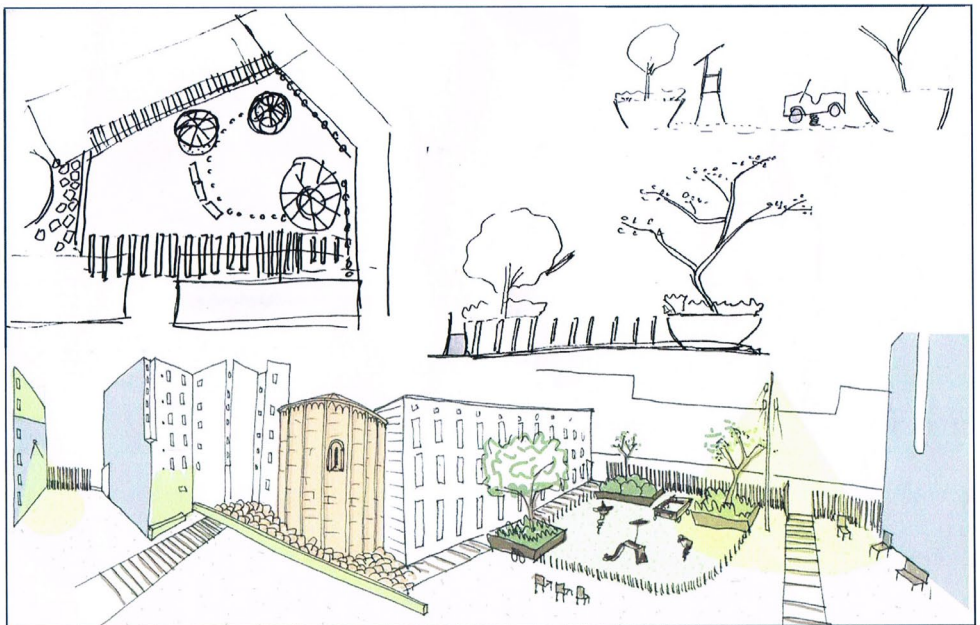


INTERVIEW WITH NEIGHBOURHS

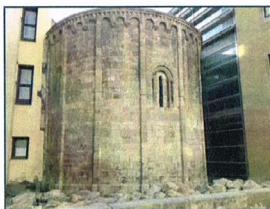
WHAT WOULD THEY NEED? ACTION PROGRAM HOW WOULD THEY IMAGINE IT?
WHO COULD MANAGE- TAKE CARE OF IT?

They would like the site to have more trees or other 'green' elements. They also claim that the walls around the gap could be improved significantly if artists were allowed to paint on them. They think that the municipality should lead this kind of initiatives, and that, if the communities decide to take on, it is because the administration does not respond as it should.

LOCATION, AERIAL VIEW, 3D AND SECTIONS WITH MEASURES



PICTURES



GROUP 3 GAP 4 BIO-BUILT TXEMA - PL. DELS ANGELS

TYPE OF URBAN VOID

PUBLIC OR PRIVATE? FENCED OFF OR ACCESSIBLE? VACANT OR CERTAIN APPROPRIATION? TYPE OF DIVIDING WALL. ARE THERE WINDOWS? ART?

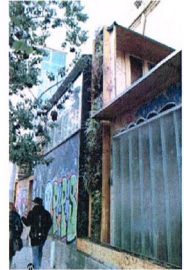
PRIVATE
 FENCED, BENCHES, FLOWERPOTS (PLASTIC)
 LITTLE GREENHOUSE, NATURAL CONSTRUCTION RESEARCH
 MODERN WINDOWS, SCRAWL, GRAFFITI



PHYSICAL TRACES of neighbourhood APPROPRIATION

STREET ART? GRAFFITI? VEGETATION? SPONTANEOUS OR PLANTED? VEGETABLE GARDEN? FORMAL OR INFORMAL? PAVIMENTATION? SHAPE? BENCHES? OTHER INTERVENTIONS...

APPROPRIATION: PRIVATE USE
 CULTURAL ACTIVITIES / REINVIDICATIVE SPACE / CONSTRUCTION COURSES
 GREEN Diy WALLS
 DIVERSE 'ARTIFICIALISED' VEGETATION - GREEN COURTYARD



NON- PHYSICAL TRACES in or along THE GAP

ACTIVITIES. HABITS. HOBBIES. FLUXES. VIEWS. CONFORTABILITY. DRAINAGE. LIGHTING.

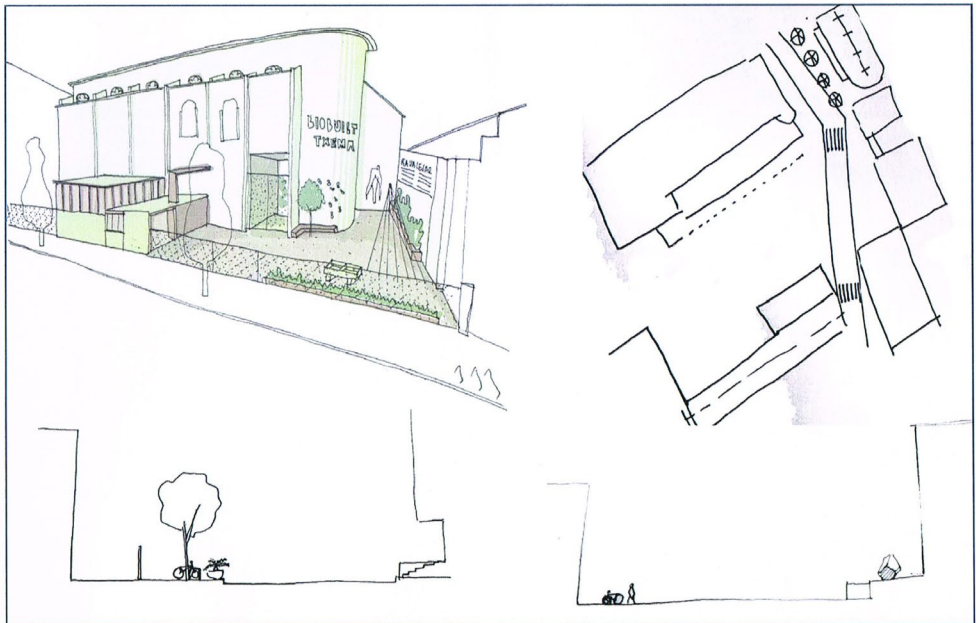
URBAN ORCHARD AND RECYCLING PLACE
 NO FLUX OF PEOPLE IF NOT OPEN
 NOT A COMFORTABLE SPACE
 WITHOUT DRAINAGE
 WITHOUT LIGHTNING

INTERVIEW WITH NEIGHBOURGHs

WHAT WOULD THEY NEED? ACTION PROGRAM HOW WOULD THEY IMAGINE IT?
 WHO COULD MANAGE- TAKE CARE OF IT?

Despite the indications on the fence of this gap, people passing by or users of the 'plaça dels Angels' don't have a clear idea of the specific activities developed inside of the urban void. Even though, when we approached a couple young men, they explained how they find that it is an assert to the surroundings, because they think that the activities that happen there are probably initiative of people they can relate and not institutions such as the municipality or the MACBA

LOCATION, AERIAL VIEW, 3D AND SECTIONS WITH MEASURES



PICTURES



AFFICHE

TYPE OF URBAN VOID

PUBLIC OR PRIVATE? FENCED OFF OR ACCESSIBLE? VACANT OR CERTAIN APPROPRIATION?
TYPE OF DIVIDING WALL. ARE THERE WINDOWS? ART?

Public, accesible, some art

PHYSICAL TRACES of neighbourhood APPROPRIATION

STREET ART? GRAFFITI? VEGETATION? SPONTANEOUS OR PLANTED? VEGETABLE GARDEN?
FORMAL OR INFORMAL? PAVIMENTATION? SHAPE? BENCHES? OTHER INTERVENTIONS...

Graffiti, planted vegetation, formal , with pavement, geometrical shape

NON- PHYSICAL TRACES in or along THE GAP

ACTIVITIES. HABITS. HOBBIES. FLUXES. VIEWS. CONFORTABILITY. DRAINAGE. LIGHTING.

Social activities, take a beer, social reunions isn't very illuminated

PICTURES

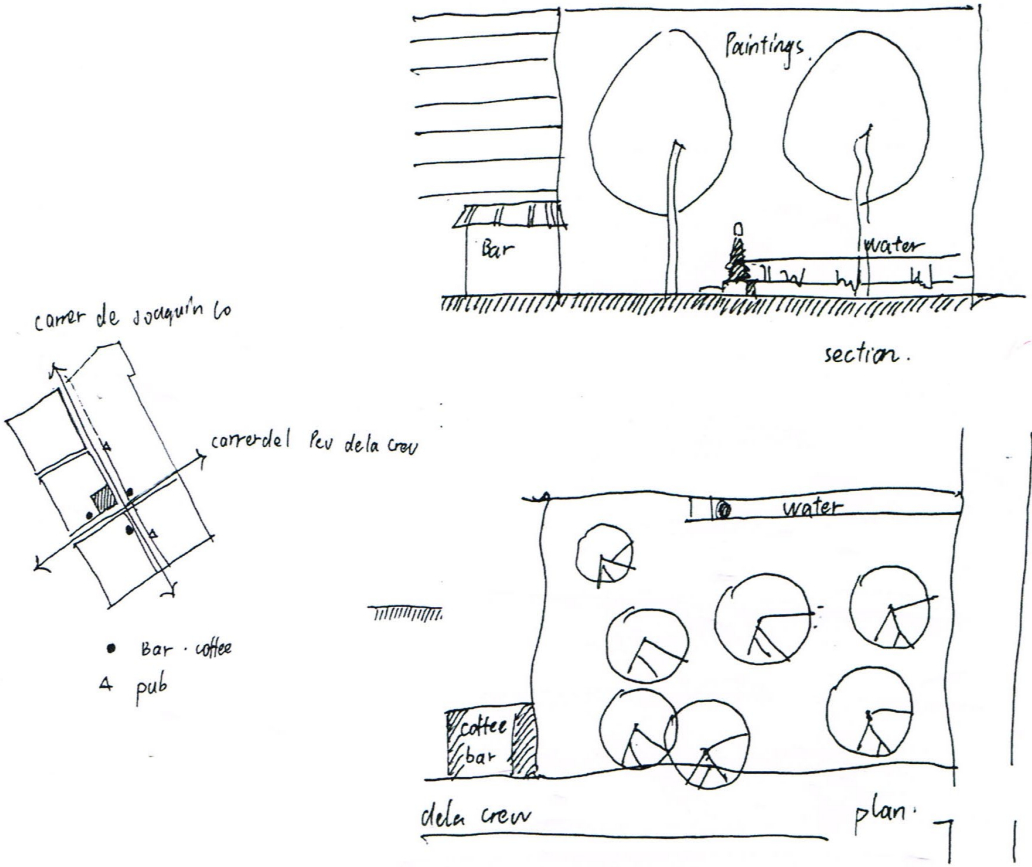


INTERVIEW WITH NEIGHBOURHS

WHAT WOULD THEY NEED? ACTION PROGRAM HOW WOULD THEY IMAGINE IT?
 WHO COULD MANAGE- TAKE CARE OF IT?

The don't use this very often. Just in the restaurant area

LOCATION, AERIAL VIEW, 3D AND SECTIONS WITH MEASURES



- Bar · coffee
- △ pub

MASTERPLAN

Each group made a solution according to different gap requirements and different landscape intervention resources

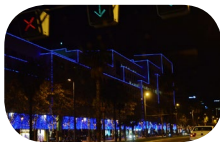
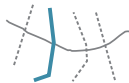
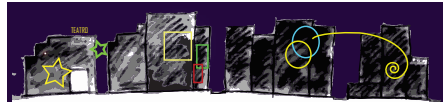
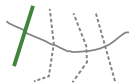
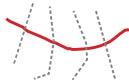
Methodologies were quite different to get the goals: lightening was used by some groups, but it was also used the concept of recycling or greening with threads or creeper plants through the gaps

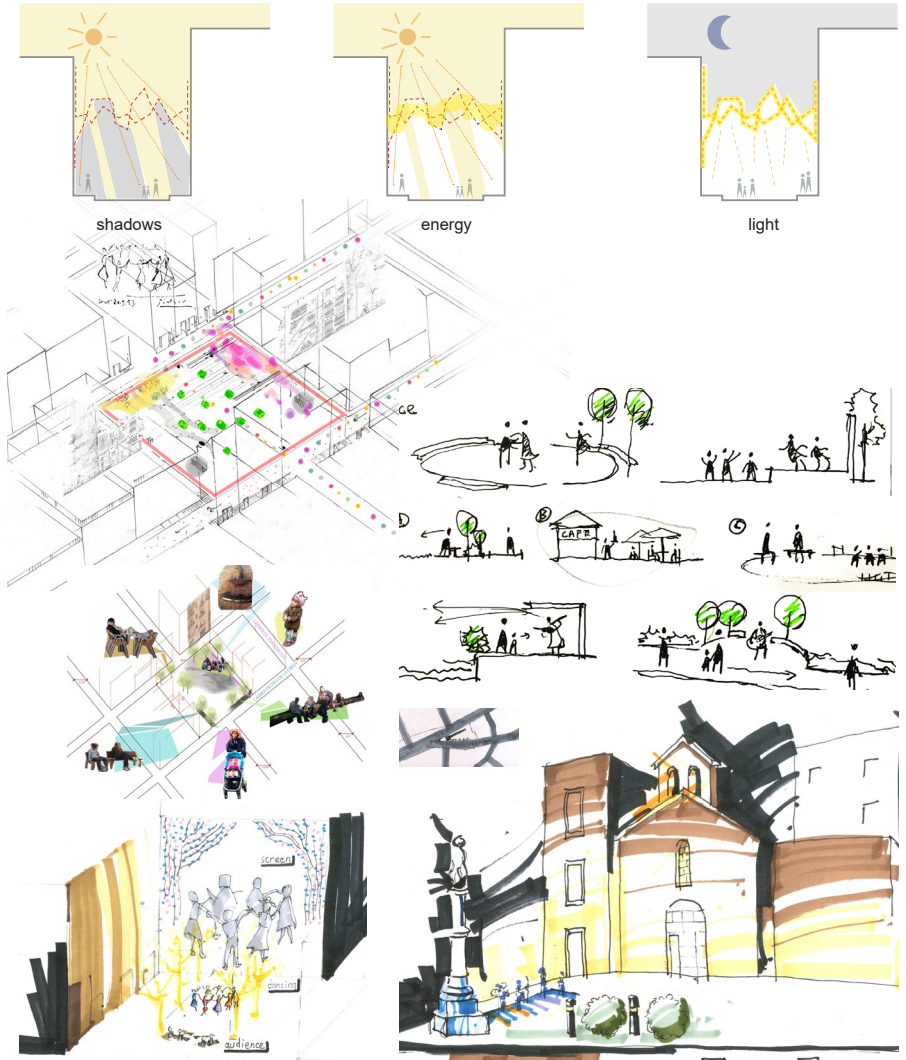




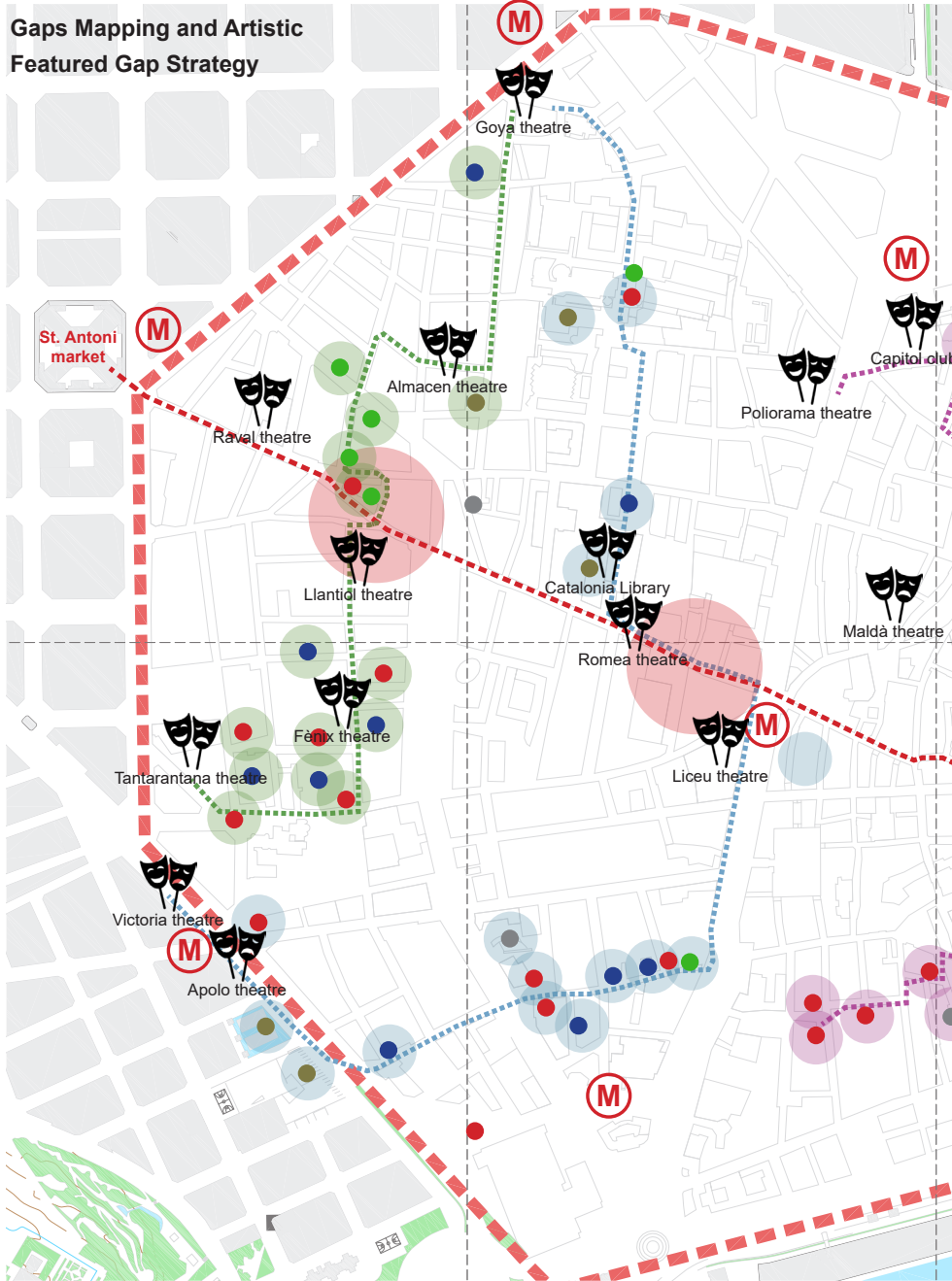
GROUP 1_GAPS /THEATER / LIGHT

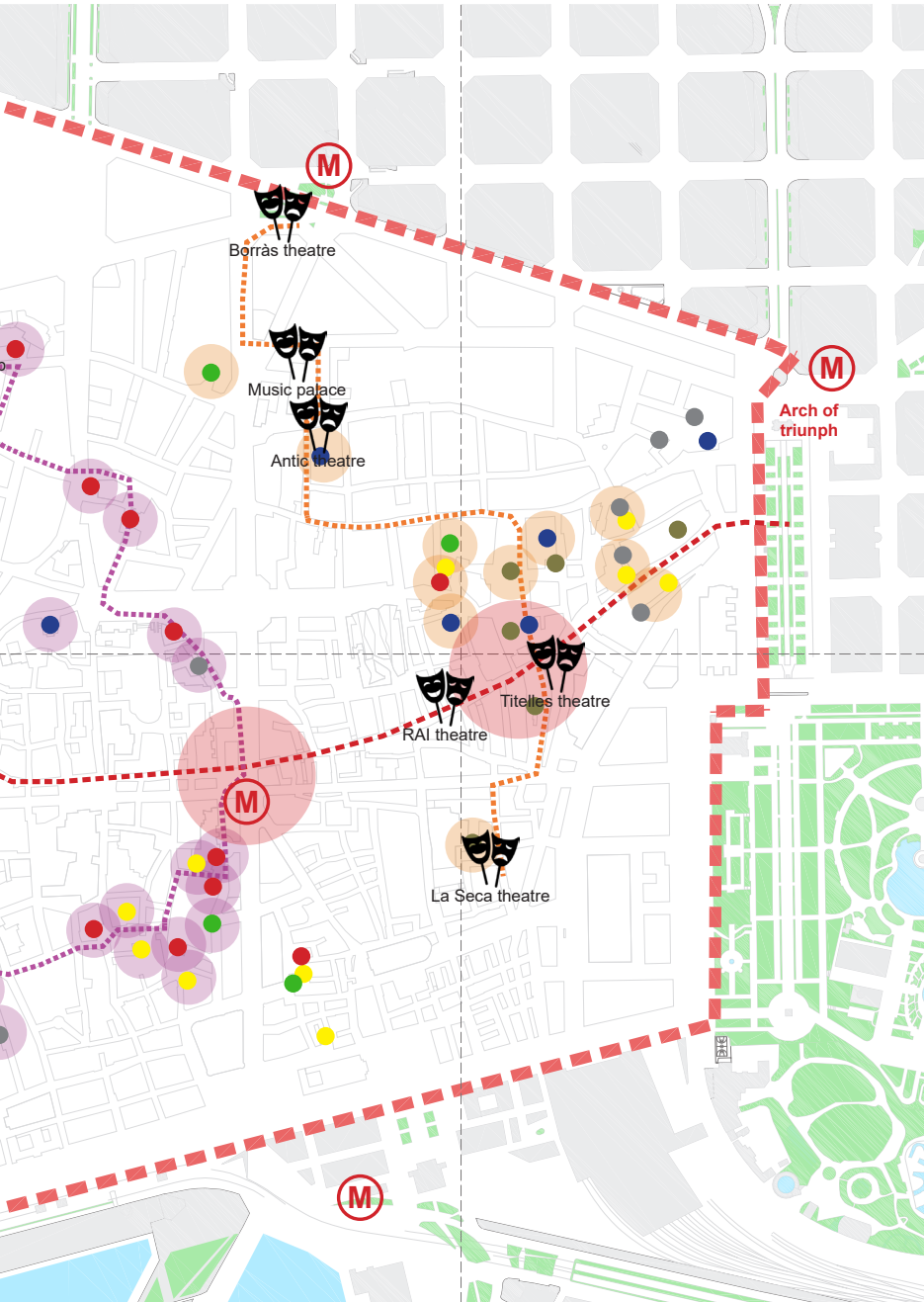
The first masterplan enlightened and exalted the urban gaps with Light. They created a lighted artistic route in order to connect the artistic spots and reinforce the artistic Raval movement. The routes articulated certainly several artistic spots. They created a vertical lighted and artistic permeability of the whole Raval enlightening and connecting gaps, streets and theaters.





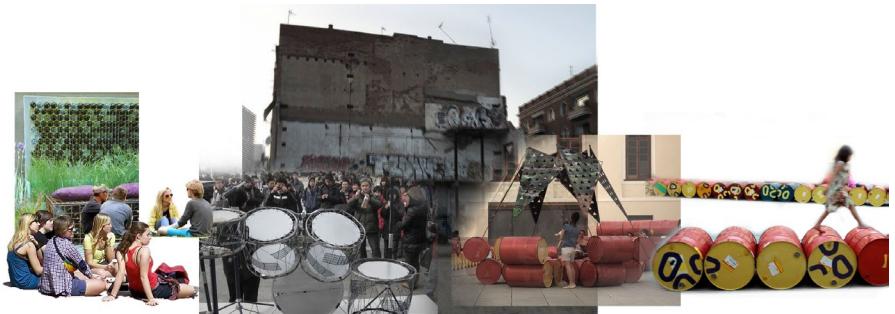
Gaps Mapping and Artistic Featured Gap Strategy





GROUP 2_REACTIVATING URBAN GAPS

This group goal was to reappropriate the city's most under utilized spaces in an especially trouble area of Raval. Their propose was based on light and recycling to create new public spaces to be enjoyed, to transform this degraded area into an active, attractive and friendly area. They designed led light bins which were located tin strategic gaps to get their goal.



INTENSIVE WORKSHOP IN LANDSCAPE ARCHITECTURE 2016

HARBIN INSTITUTE OF TECHNOLOGY (HIT - SCHOOL OF ARCHITECTURE) & MELANLARCH (ETSAB-UPC)

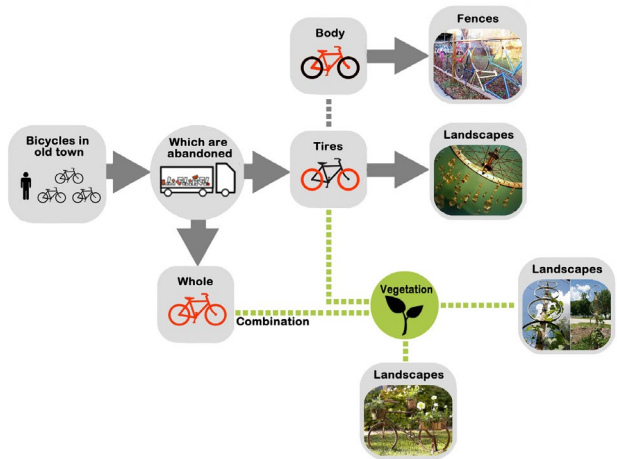
LI HONGJI_KIMBERLY ELACUTT_JESUS ANTONIO CEREZERES_GABRIELA VEIGA_JORDI FIGOLS_VICTOR ADOIRNO

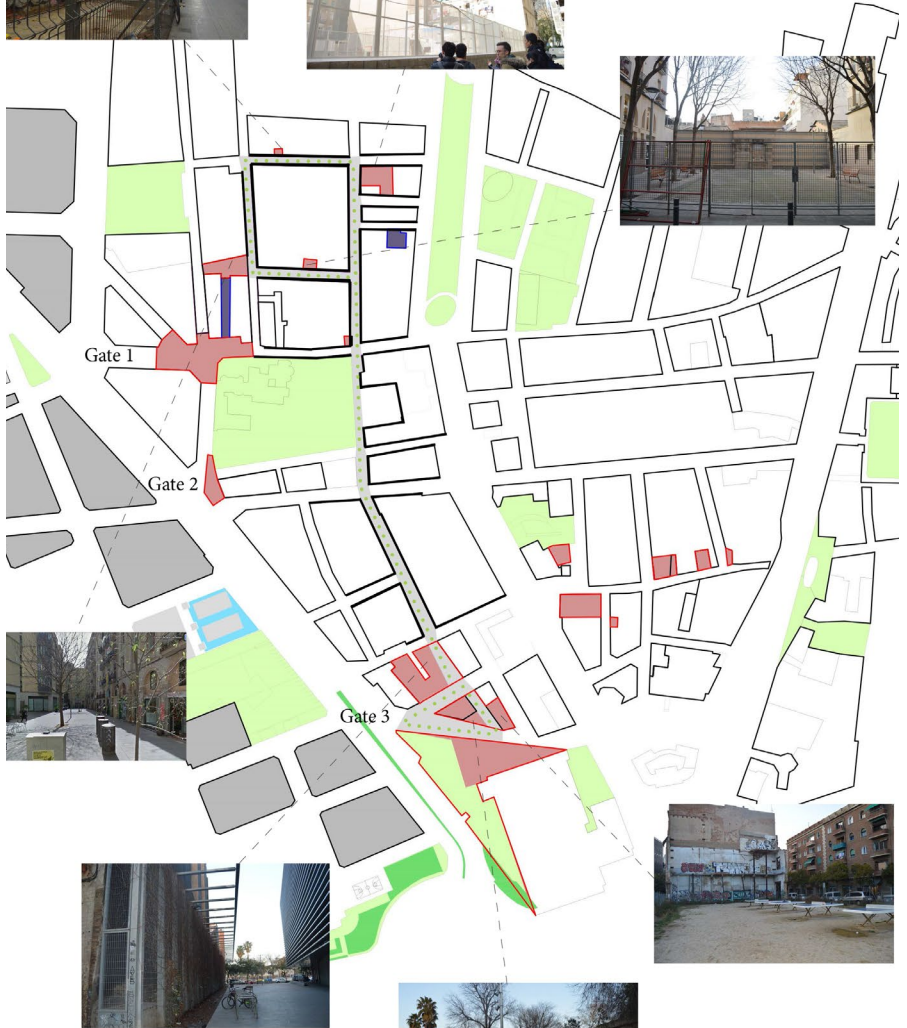
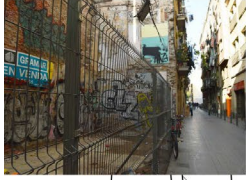
REACTIVATING URBAN GAPS





WE WILL BEGIN WITH A SERIES OF SMALL ACTIVITIES, SOME OF WHICH ARE RELATED TO RECYCLING, OTHERS WHICH ARE RELATED TO LIGHTING. WE WILL ALSO HAVE OTHER ACTIVITIES IN PARALLEL WHICH ARE NOT NECESSARILY RELATED TO EITHER. AS TIME PASSES, WE WILL SEE WHICH ACTIVITIES ARE MORE OR LESS SUCCESSFUL AND ONCE WE HAVE REACTIVATED THE SOCIAL SCENE, WE WILL START MAKING THOSE SUCCESSFUL ACTIVITIES MORE VISIBLE AND OPEN TO THOSE WHO ARE NOT FROM THE NEIGHBOURHOOD, AND IN THAT WAY END THIS AREA'S ISOLATION.





- Recycling path
- Public gap
- Private gap

COMPONENTS:

- Trash deposit slots
- LED lights

SOCIAL INCENTIVES:

Citizens get points for recycling.



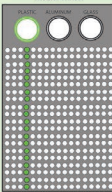
MODULAR INTERACTIVE LED LIGHT BIN

DIFFERENT BIN MODELS JOINED TOGETHER

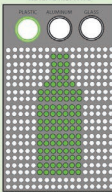
ECONOMIC POTENTIAL SOCIAL POTENTIAL ECOLOGIC POTENTIAL ARTISTIC POTENTIAL

WHAT HAPPENS WHEN THE BINS ARE USED?

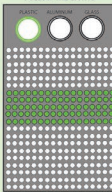
STEP 1: INSERT TRASH



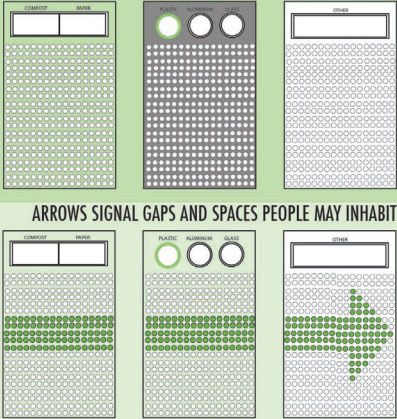
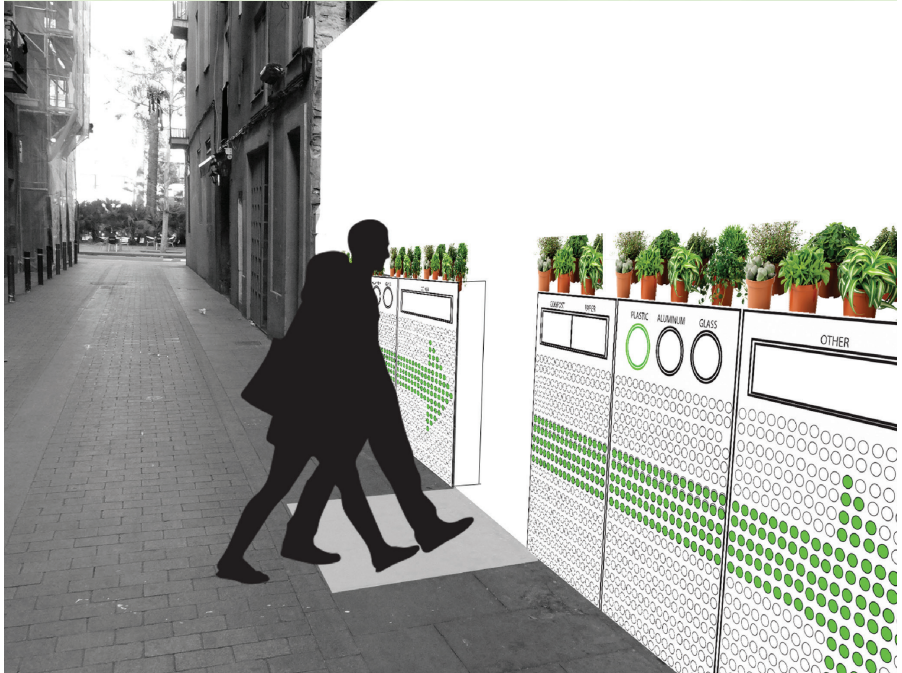
STEP 1: RECEIVE MESSAGE



STEP 3: FOLLOW THE LIGHTS

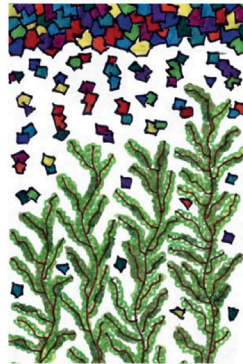


ARROWS SIGNAL GAPS AND SPACES PEOPLE MAY INHABIT

GROUP 3 _ SHOULD I STAY OR SHOULD I GO

The group created four strategies to be generated in the gaps : dispersion (from public concentration points), connection (through threads), vocabulary (the same for all the gaps with an iconic chair) and surprise (visual impact through mixing of vegetation and street art). The masterplan they created showed the concentration points from which the dispersion was created to the gaps. The way to do it, this connection threads are also shown in the masterplan, the same as the iconic chairs.



Viscum album

Smilax aspera

Asparagus acutifolius

Festuca arundinacea (no cut)

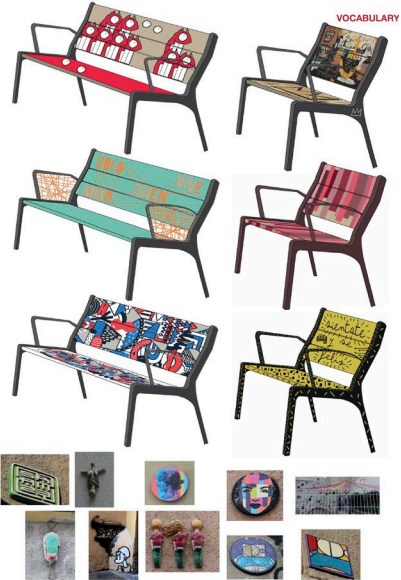
Cistus albidus

Asparagus acutifolius

Parthenocissus tricuspidata

Brachypodium retusum

Hedera helix







GROUP 4_ RECYCLING GAPS

This group created an intervention in the gaps through recycle work strut placing them on the Gaps according to the neighborhood necessities during the week and for a Saturday marked during the week-ends. The masterplan shows the work struts on the big gaps, medium gaps, corners or where not to intervene.



CLASIFICACION OF THE GAPS

BIG GAPS

The work strut are placed creating a big grid.

Los puntales de obra están colocados creando una gran retícula.

MEDIUM GRAPS

The work strut are placed creating a medium grid.

Los puntales de obra están colocados creando una retícula media.

CORNER

The work strut are placed on the perimeter

Los puntales de obra están colocados en el perímetro.

NON-INTERVENTION

in the gaps where are schools or schools backyards

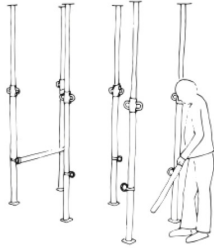
No intervenimos en las gaps que son colegios o patios de colegio.



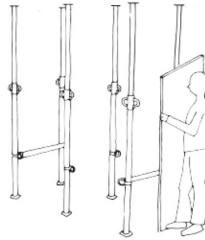
MIND THE GAP

REACTIVATING GAPS

1



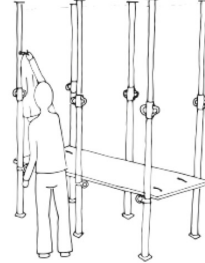
2



3



4



RECYCLE WORK STRUT

It intervenes from its permanent features (struts work) recycled a constructura company.

These elements are placed depending on the size and shape of GAP each.

It aims to create spaces where each MULTIUSOS THIS STRUCTURE DEPENDING ON YOUR NEEDS will adapt .

The itinerary is : SATURDAY MARKET . all gaps are united and space suits this activity.

The rest of the week becomes free space for the neighborhood

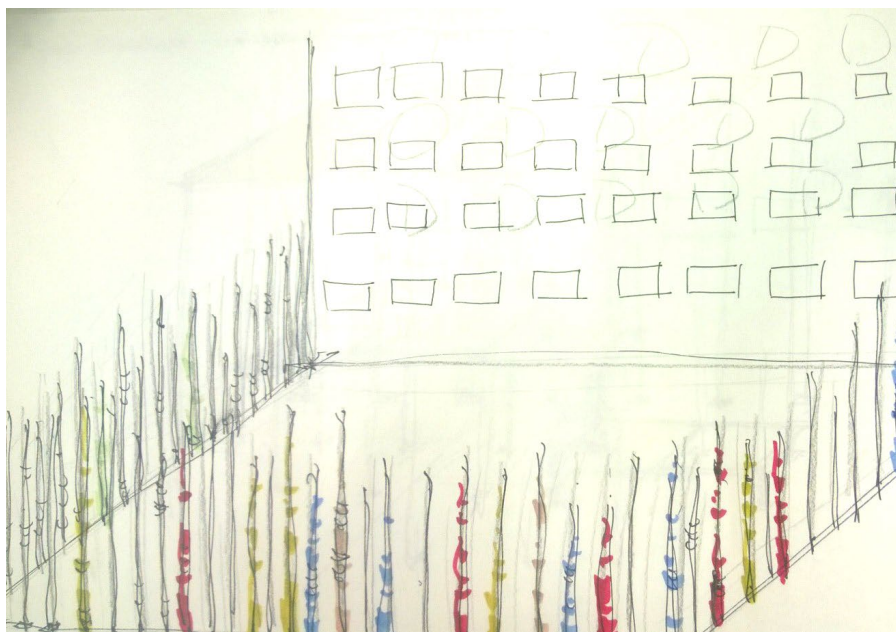
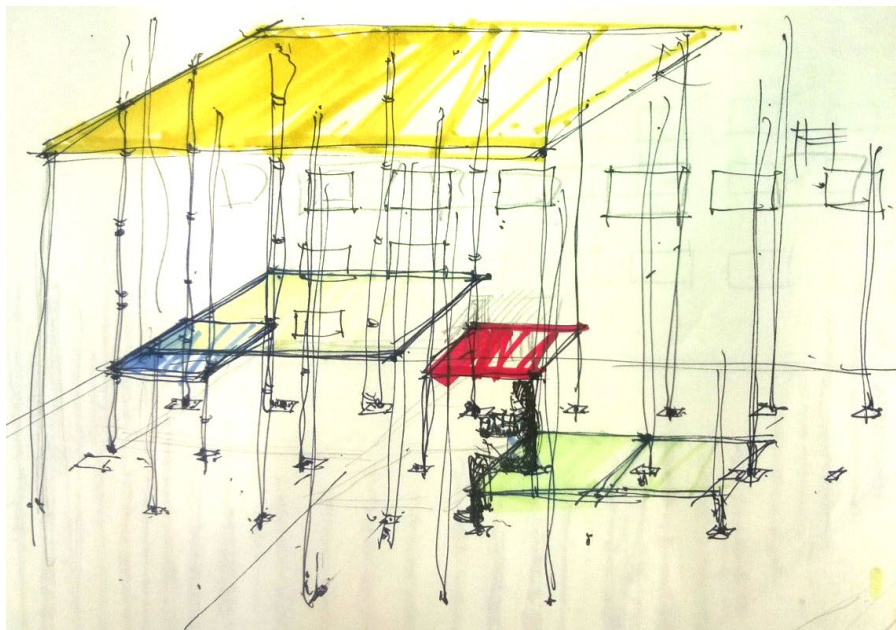
Se interviene a partir de unos elementos fijos (puntales de obra) reciclados de una empresa constructura.

Estos elementos se colocarán dependiendo del tamaño del GAP y la forma de cada uno.

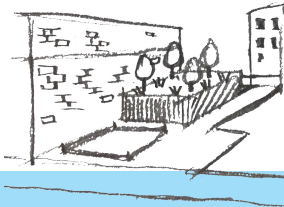
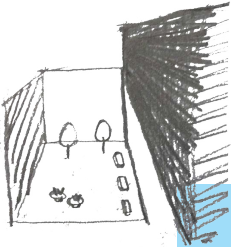
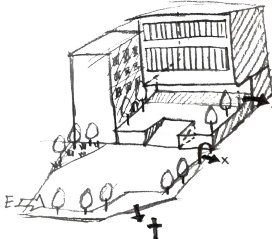
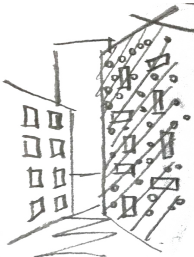
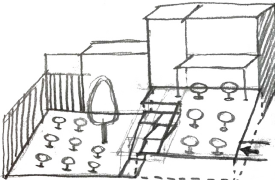
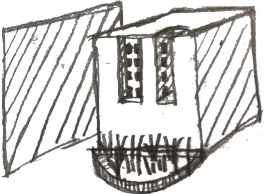
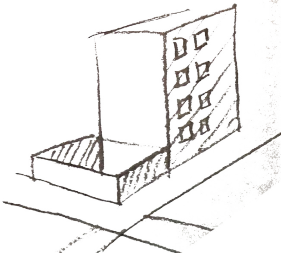
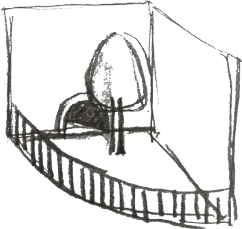
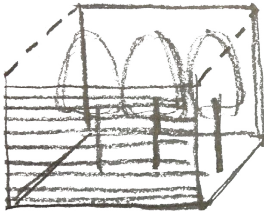
Se pretende generar espacios MULTIUSOS donde cada uno se ADAPTARÁ ESTA ESTRUCTURA DEPENDIENDO SUS NECESIDADES.

El itinerario consiste: SABADOS DE MERCADO. Se unen todos los gaps y el espacio se adapta a esta actividad.

El resto de la semana se convierte en ESPACIO LIBRE para el vecindario.



ANALYSIS



In these drawing we analyzed and compered all the different types of limits inside each gap (form, existing elements, scale, light, value, vegetation and permanence)

THE ELEMENT

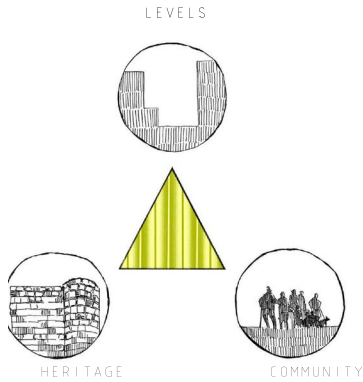




GROUP 6_MIND THE STEP

They created windows on the heritage because most of them followed the old roman fortifications with a methodology of levels game (deep gaps and elevated gaps). This group tried to link the architectural heritage and the community reinforcing the beauty and opening views playing with a different levels intervention. The methodology is playing with a recycled triangular modules combined in different ways created with local resources by the community. The masterplan shows the different disposals and gaps.

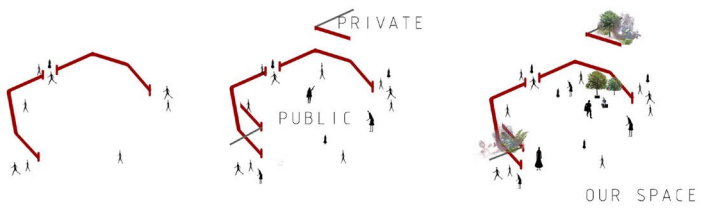
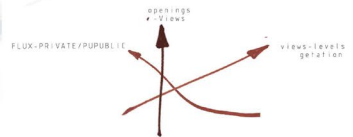
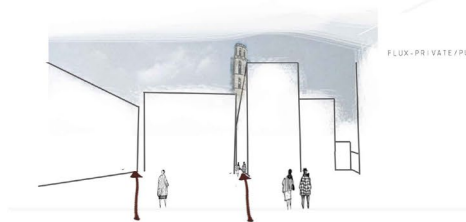
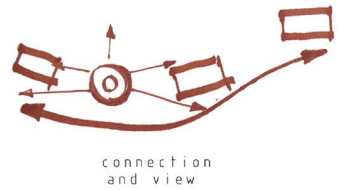
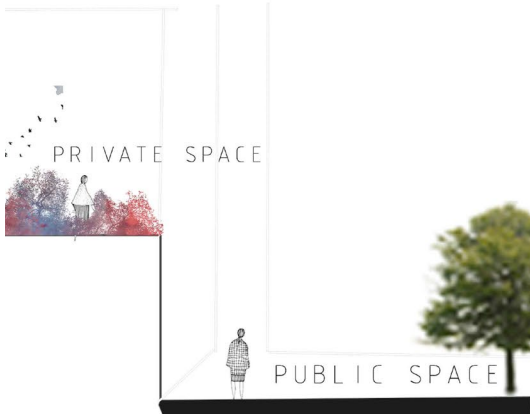


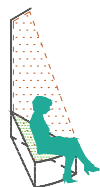
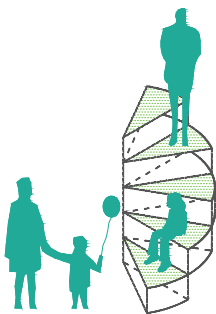
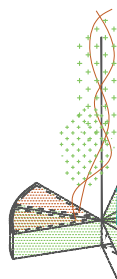
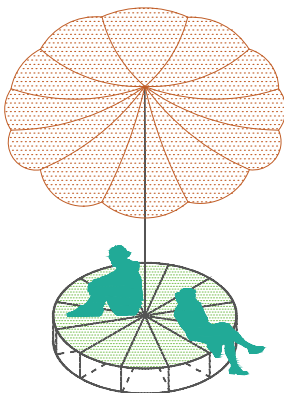


CONCEPT

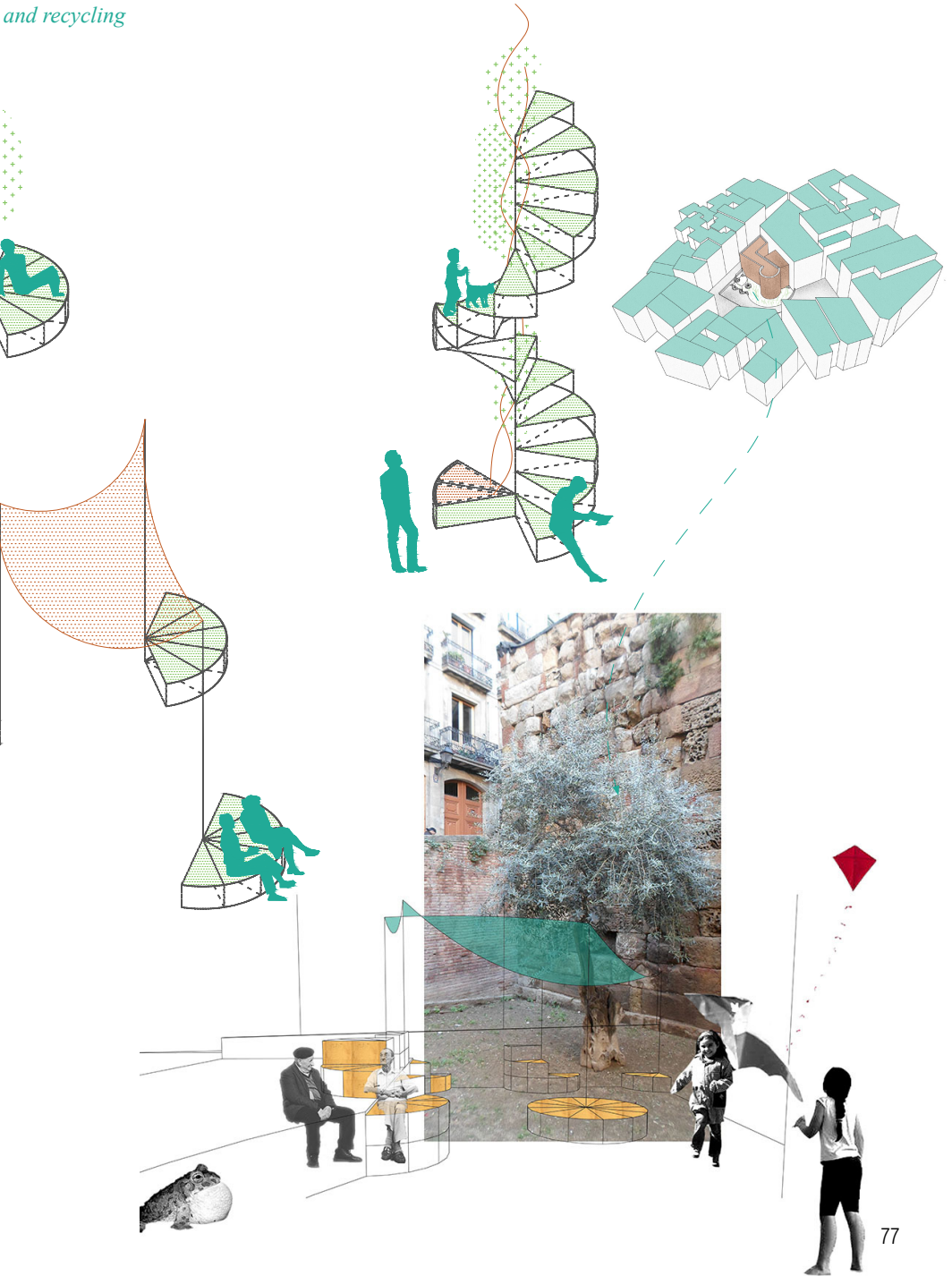
LEVELS
HERITAGE
COMMUNITY

Our project aims to link the architectural heritage and the COMMUNITY, revealing the beauty already existing, generating views to celebrate it, reconnecting the public space with the moat which is now an urban scar. Our proposal is to use a game of levels to give back those places to the community and opening the views. It is a quite minimal and low cost intervention playing with modules that generate a playful and modular link between the public space and our gaps. The triangular modules we imagined can be combined in many ways, adapt themselves to different height differences, they can become banks, plant pots... Those modules can be made of recycling materials and be realized with local resources by the community.



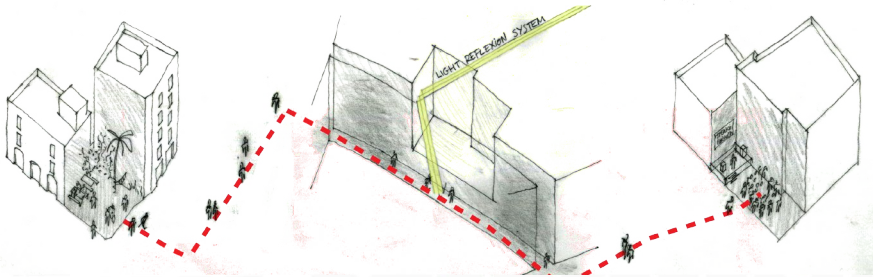


ements,
and recycling



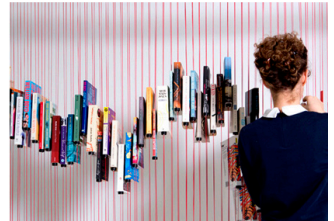
GROUP 7&8_ ENLIGHTENING CORNERS

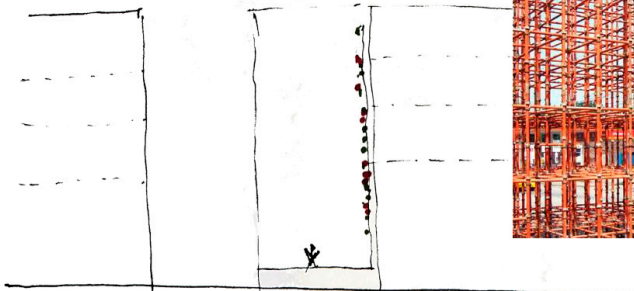
Created a strategy to light a route of activities generated by the neighborhood associations and expressions. As part of the interventions, a system of totems that connects digitally to a map where other narrow streets and other activity gaps are placed. The masterplan shows a narrow street lightened that connects these neighborhood activities as an example of intervention attracting outer people to the Raval.



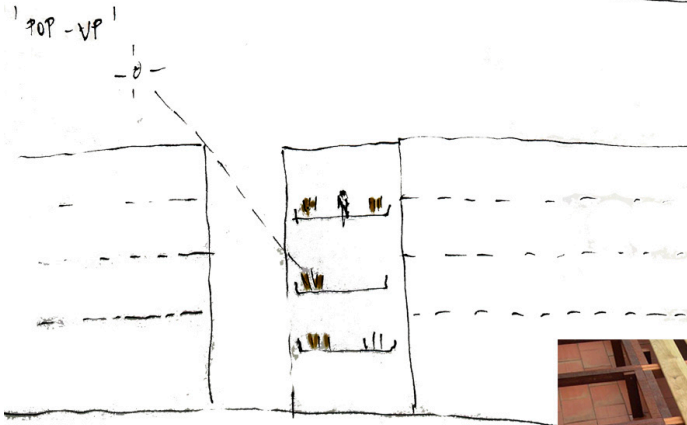
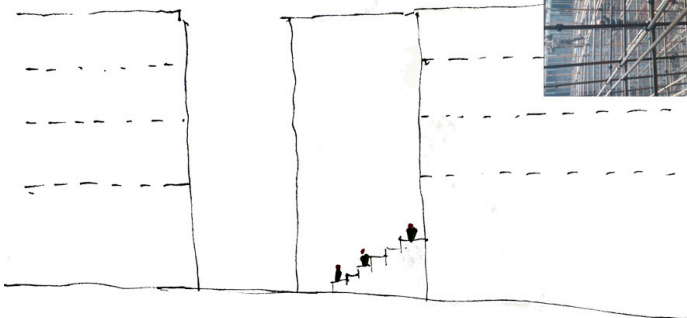
ASOCIACIONES

- | | |
|---|---|
| 1. El Mercadís | 9. Centro Filéino Tuloyan-San Benito |
| 2. Associació de Veïns del Casó Antic | 10. Casal Jove Atlas |
| 3. Agrupació Cultural Folklorica de Barcelona | 11. Associació Cultural Punt en Comú. Espai Major de l'Immaginari |
| 4. Col·lectiu Manispeus | 12. Col·lectiu Artístic El Camarado |
| 5. Associació Creació d'Estudis i Projectes Socials | 13. CCR - CCR, Drassanes |
| 6. Associació Colla Gegantera del Casó Antic de Barcelona | 14. Escola Cívica d'Idiomes Barcelona Drassanes |
| 7. Associació Cultural l'In Batlia | 15. Associació d'Artistes Audiovisuals CoMediU Pasopasso |
| 8. Associació per a Joves TEBI Ravalnet | |

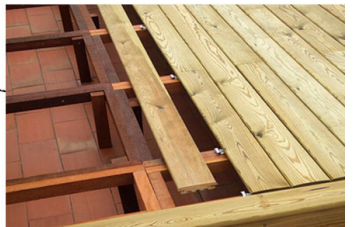




SPEAKING CORNER



IDEATO URBANO
ORCHARD



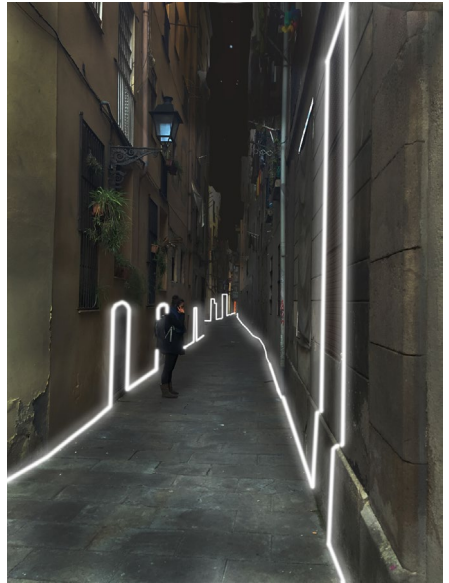
Han Hua Yu, Sining Zhang, Gabriela Baca, Olivia Torrelli, Teresa Baldó, Mercy Guerrero, Antonio Nortes
Li Tian Xia, Begoña Castañón, Carla Bonfill, Huiting Huang, Melanie Theodosopoulou, Antonia Suero



LIGHT INTERVENTIONS IN NARROW STREET GAPS



Artificial lighting



Artificial lighting



Natural lighting



Section

Han Hua Yu, Sining Zhang, Gabriela Baca, Olivia Torrelli, Teresa Baldó, Mercy Guerrero, Antonio Nortes
Li Tian Xia, Begoña Castañón, Carla Bonfill, Huiting Huang, Melanie Theodosopoulou, Antonia Suero



Actual situation

We choose this GAP (Carrer del Petons) to make the intervention because it represents most of the conditions of paths and narrow streets that are located in the old city of Barcelona.

The intention is to make people visit these streets that are hidden in the city. That people notice they are there because there is something calling the attention.

We decided to make a lightning intervention to give light to these narrow spaces. The intervention consists in two types of lightning, artificial and natural.

In order to connect the narrow street gaps and the activity gaps we placed, as part of the interventions, a system of totems that connects digitally to a map where other narrow streets and other activity gaps are placed.



POP UP GREEN!

On September 28th 2016, a rug of small plants covered part of Plaça Nova in Barcelona, in front of the Architects' Association of Catalonia, to give the starting signal for the 9th International Biennial of Landscape.

The installation POP UP GREEN, developed by the International Biennial in Landscape Architecture of Barcelona with the collaboration of Barcelona City Council, sought interaction with citizens, who could take over 8,000 plants and leave them in other parts of the city, in order to design landscapes they imagined or demanded.

In this way, the installation was transformed in a social study that was intended to lead to interventions on spaces with green covers, guerrilla gardening complaints of empty spaces, games with improvised nature and living installations.

This action of tactical urbanism, dressing in green Ciutat Vella's heart, served as a starting point for the Barcelona International Biennial of Landscape Architecture through an event open to the public and designed to attract a non-specialized audience.



Furthermore the action concluded the first stage of a wider scope project on the Barcelona City voids, linked to the International Landscape Architecture Workshop “Mind the Gap” realized earlier that same year February- March 2016 by the MBLandArch students together with Harbin University Students.

After the students had been studying, describing and proposing on the old town city void, they were asked to lead bottom up dissemination of the intervention and be the expert designer to express what the citizens and social groups living, working and acting in the neighborhood would like through the only tool of vegetal material given to them in high quantities.

The advice and full cooperation of the students made possible the transformation from the huge rug of small plants covered part of Plaça Nova in Barcelona to its mobilization in little groups to different none that visible spots that were claimed to be embellish, redesign, improve or simply reconsider. Images of the intervention were posted on the social networks under the hashtag #popgreen giving a wide spectrum of tactical modest intervention that made the city flourish ephemerally.

LECTURES

During the workshop, the students had the opportunity to attend two conferences on public space.

The students had the chance to participate in a a correction and discussion of their proposals with the professor **MANUEL RUISÁNCHEZ**.

The inaugural lecture, given by **MARIA RUBERT DE VENTOS** , dealt with the evolution of the public space of the city of Barcelona from its origins to the present.

The closing conference, by **ENRIC BATLLE I DURANY**, dealt with the conception of Western urban public space from a new vision for the 21st century.

MBLandArch *_lectures*

INTERNATIONAL

CONFER
29 DE F
"BARCELONA

MIND TH

MARÍA RUBERT
Catedrática de Ur
y Dr. arq

HARBIN INSTITUTE

ETSAB CS-10
18.30 hr

AL WORKSHOP

PRÈNCIA
EBRER
BACKDROP”

THE GAP

T DE VENTÓS
banismo ETSAB
uitecta

OF TECHNOLOGY

Lloc: CS10-ETSAB 18:30hr ETSAB



UNIVERSITAT POLITÈCNICA
DE CATALUNYA
BARCELONATECH

MBLandArch



CENTER
市中心



GREEN LINES
绿带

ENRIC BATLLE, DIRECTOR MBLandArch

景观学硕士项目，系主任



PRODUCTION
生产中



WASTE
废弃物处理

h, Barcelona



CONCLUSIONS

All the groups have seen in the Raval gaps an opportunity to answer to the requirements of the place. Groups have pointed out different requirements: cultural, social and abandoned historical values.

The approach to the project is completely different in each case although sometimes the intervention is in the whole Raval although they are all ephemeral interventions.

Therefore, the analysis of each study area led them to the masterplan creating cultural connections, reinforcing trouble social areas, social connections, neighborhood connections, historical value sites and opening windows to their beauty.

Methodologies were quite different as well to get these goals: lightening was used by some groups, but it was also used the concept of recycling by: “recycling bins”, “working struts”, “iconic chairs”, “triangular modules”. The concept of greening with threads or creeper plants through in the gaps is also present. Finally, while the focus, the goal and methodologies has been diverse, from working on the perimeter of the gap (with the fences, inclined or vertical) to create windows to the historical places or working inside but in different levels or focus in the route between gaps to connect them have been different approaches shown in the masterplan.

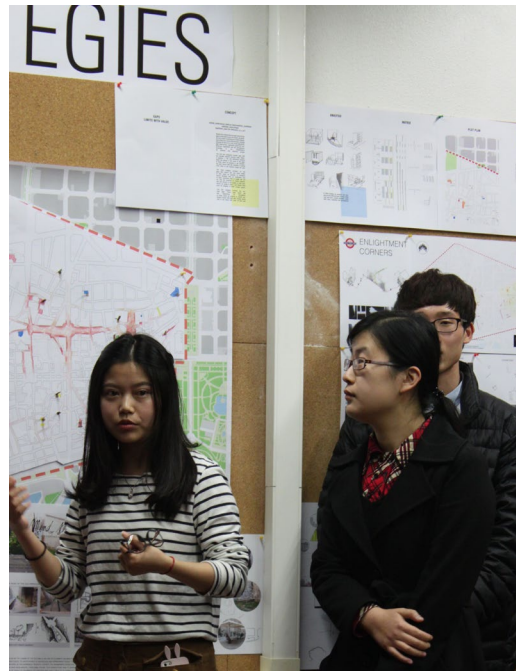
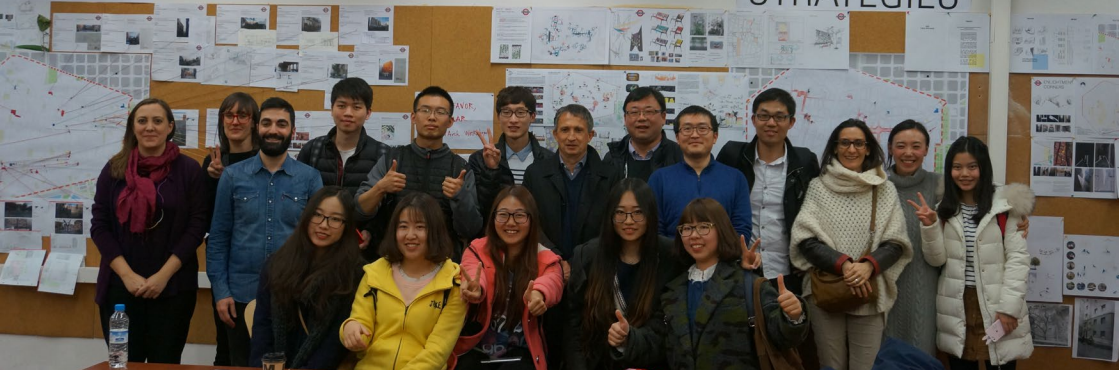
Thus, the eyes of these landscape architects focused on different requirements with different methodologies and approaches but all of them focused on a common goal: improving the Raval neighborhood, working for the people with landscape resources just focusing on the gaps.

Thus, mind the gap!!!.



ANALYSIS

STRATEGIES



GLOSSARY

PUBLIC SPACE

Philosophical concept, s.VII.a.C.Grecia. In contemporary political philosophy: public sphere, public space is a space for political deliberation open to all, without exception.

AGORA

Icon of the participatory and democratic public space (originally contradicted the current concept: it was forbidden to metics and women)

SOCIAL SUSTAINABILITY

a socially sustainable city tries to achieve the commitment in the life quality of current and future generations in the local development, avoiding the social exclusion and allowing the participation of all people in the life of the municipality



GENTRIFICATION

This is a common and controversial topic in town planning. It's a process of urban transformation in which the original low-income population of a sector or neighborhood, is gradually displaced by another high-income population.

OCCUPY MOVEMENT

The international branch of the Occupy Wall Street movement that protests against social and economic inequality around the world, its primary goal being to make the economic and political relations in all societies less vertically hierarchical and more flatly distributed. Local groups often have different focuses, but among the movement's prime concerns deal with how large corporations control the world in a way that disproportionately benefits a minority, undermines democracy, and is unstable.

TERRAIN VAGUE

With the coining of the term Terrain Vague, Ignasi de Solà-Morales is interested in the form of absence in the contemporary metropolis. This interest focuses on abandoned areas, on obsolete and unproductive spaces and buildings, often undefined and without specific limits, places to which he applies the French term terrain vague. Regarding the generalized tendency to “reincorporate” these places to the productive logic of the city by transforming them into reconstructed spaces, Solà-Morales insists on the value of their state of ruin and lack of productivity.

Quaderns d'arquitectura i urbanisme > 1996: Núm.: 212 Terra-Aigua = Eau-Terre > Solà-Morales i Rubió

THE VOID

Productive Concept for Urban Public Space Borret makes a case for the “void” as productive in urban public space because the void is not fixed to a single interpretation or intention. Through this it has the opportunity to become a truly public space where conflicting interests are continually negotiated and no final resolution ever arrives. Through the writings of Claude Lefort and Rosalyn Deutsche, Borret presents this sustained instability as essential for the democracy.

Borret, Kristiaan. “The ‘Void’ as a Productive Concept for Urban Public Space.” In *The Urban Condition: Space, Community, and Self in the Contemporary Metropolis*. Ghent Urban Studies Team eds. Rotterdam: 010 Publishers, 1999.

VOID METABOLISM

An urban formula which focuses on void spaces which develop between buildings when they are rebuilt. This is a highly sustainable urban form which regenerates itself; with privately owned properties. It can be considered a type of metabolism, though quite different in content than the 1960s architectural thought. The recent generation of “Void Metabolists”, as outlined in Yoshiharu Tsukamoto’s “Void Metabolism” are concerned with the actual ecological process of growth and change of the city.

Theories by Atelier Bow-Wow. Atelier Bow-Wow, Behaviorology; New York : Rizzoli p 339-340

TACTICAL URBANISM

An umbrella term used to describe a collection of low-cost, temporary changes to the built environment, usually in cities, intended to improve local neighborhoods and city gathering places.





LANDSCAPE URBANISM

Theory of urban planning arguing that the best way to organize cities is through the design of the city's landscape, rather than the design of its buildings .

The city of the future will be an infinite series of landscapes: psychological and physical, urban and rural, flowing apart and together. They will be mapped and planned for special purposes, with the results recorded in geographical information systems (GIS), which have the power to construct and retrieve innumerable plans, images and other records. Christopher Alexander was right: a city is not a tree. It is a landscape.

by Charles Waldheim, Mohsen Mostavi & James Corner.

CREDITS

PARTICIPANTS

**Andres Trujillo
Juanita Leal
Kimberly Blacutt
Jesús Cereceres
Xi He
Corina Andueza
Ines Sanfeliu
Claudia de Sas
Neus Soto
Adrià Ribas V
Malgorzata Stryjek
Marie Montocchio
Begoña Castañón
Carla Bonfill
Huiting Huang
Gabriela Baca
Olivia Torrelli
Chi yuwei
Jordi Fígols
Paloma Mosto
Mattias Hagegard
Dario Hernán
Elsa Mampel
Antonio Nortes**

**Jazmin Valdés
Alba Guillén
Gabriela Vega
Víctor Adorno
Lidia Carrillo
Francesco Maglia
Sarah Ramírez
Alexandra Segovia
Yahiris Pimentel
Giovanna Bartoleschi
Ivelisse Valdez
Melanie Theodosopoulou
Teresa Baldó
Mercy Guerrero
Qi Kai Lun
Li Hong Ji
Chen Xiao Chao
Wang Min Cong
Zhao Xin Yu
Wu Si Jie
Hua Ying Hua
Li Tian Xia
Han Hua Yu
Sining Zhang**

DIRECTOR



Enric Batlle. MBLandArch Director

PhD Architect, Landscape Architect. His PhD thesis "The Garden of the Metropolis" received, among others, the UPC's Extraordinary Doctorate Prize. He is a founding partner of Batlle i Roig Architecture, the multidisciplinary recognized office based in the metropolitan area of Barcelona. He won the 2012 FAD Prize Theory and Criticism with the research work "The Garden of the Metropolis". His current research is focused on the Green infrastructure of the new Metropolitan Urbanistic Director Plan – PDU as head table of the Landscape division.

WORKSHOP COORDINATOR



Marina Cervera. International Coordinator

Architect, Urbanist, Landscape Architect. Adjunct professor of the Department of Urbanism and Regional Planning UPC. She is the founder of her own Landscape and Urbanism Studio in Barcelona. She works also as Vicepresident of Professional Practice and Policies at IFLA, Executive Committee Director of the International Biennial of Landscape Barcelona and the Coordinator of the Landscape Architecture Office at the COAC. She is a doctoral candidate with thesis entitled 'Roadscapes'.

FACULTY



Mar Pérez.

Architect. Adjunct professor of the Department of Architectural Technology UPC. She is specialized in Sustainable construction of public space. Multidisciplinary professional practice at her own architecture studio. She won the open call at the Technology Department with her own projects about Construction and facilities of public space. She is a doctoral candidate with thesis entitled 'Reduction of drinking water consumption in the city of Barcelona and environmental improvement thanks to Wsuds'.

ASSISTANTS



Javier Zaldívar.

Architect, Landscape Architect. CEO at JZPaisajismo landscape office. Former worker at Batlle i Roig Architecture. He was the landscape architect at the new seafont of Guanabara's Bay in Rio de Janeiro, finalist of Internacional 2016 FAD awards. The central theme of his research project will be 'the importance of projectuals decisions in the later management of public spaces'.



Alejandra Liébana.

She is Head of Communication department of the landscape architecture studio in Batlle i Roig where she works since 2007. She ensures the quality of Architectural Concepts and Design in Batlle i Roig. She has also studied Wharton Business School, University of Pennsylvania. Currently involved in Principles of Marketing Program around landscape architecture.



WU Huan.

Architect by Beijing Tsinghua University. He took his PhD about Canal urban planning and urban transformation, in the department of Urbanism (DUOT-ETSAB), Barcelona. Recent years he has successfully assisted International Workshop in Urban Renewal.



QIAN Li Yuan.

Landscape Architect by Sichuan Agricultural University. She is PhD graduated at the Department of Architectural Representation and Visual Analysis, ETSAB-UPC since 2016. Her PhD thesis "An Interwoven Visualization Platform For Assessing The Restoration Of Fragmented Landscape Structures" is about Landscape restoration and disaster monitoring

Intern



Lidia Carrillo.

Architect, Landscape Architect. She is working as a landscape architect in Batlle i Roig architecture. Her current work is focused on the urbanization of pedestrian streets and urban greenery. She is specialized in analysis and representation of landscape. Her research focuses on the natural beauty of the obsolete spaces, the Invisible Landscapes.

ETSAB
MBL and Arch
